



**\*espaciogallery**

159 Bethnal Green Rd E2 7DG

# flesh

10-15 july 2014

preview 10 july 6-9pm

Flesh. Just the sound of the word is evocative and provocative. For some it conjures thoughts of a juicy steak, served rare, still slightly bloody. For others it brings images of Soho bookshops and red-light windows in Amsterdam. And for the spiritually-minded, there's the mystery of communion and of God made flesh in Jesus.

Flesh celebrates the physicality and sensuality of the human body. The artists were invited to submit work which confronts the many meanings of flesh, and challenges socially-imposed taboos and notions of sin and virtue as well as exploring our preconceived notions of what it really means to be made of meat.



## **Asmaa Alanbari**

*Sacred Sand*

[www.babylon-art.com](http://www.babylon-art.com)

Alanbari's recent art work addresses the sacred and the profane, and uses metaphor to depict the body as land. Text is projected onto skin and photographed to reveal ambiguous imagery. She uses ancient imagery, sacred text and poetry that refer to specific cultures, and combines these symbols visually with flesh so that no matter what the viewer's cultural background is, one can somehow relate instinctively to her art.

Iraqi born, Alanbari is based in London. She is currently pursuing her Masters in Fine Art at Chelsea College of Art and Design.



## **Phil Barrett**

*Unconscious joy*

[www.philbarrett.co.uk](http://www.philbarrett.co.uk)

[www.facebook.com/artbyphilbarrett](https://www.facebook.com/artbyphilbarrett)

"My painting depicts flesh as seen through the skin. Painting with thickly applied paint with areas of abstraction I strive to create realistic skin or flesh tones by layering paint.

I am fascinated by the juxtaposition of warm and cool colours that we see through the skin. Essentially the flesh itself is beneath the skin but it is the flesh that I paint."



## **Nicky Callaby**

*Blood Flowers 7*

[www.nickycallaby.co.uk](http://www.nickycallaby.co.uk)

The fragility of life is expressed here in pieces that incorporate intense emotion, passion, hope and release. Some will see the implication of damage to our own flesh, which, for some can become a temporary means of survival by creating a feeling of release from overwhelming internal distress. For others these openings in the flesh are a pure expression of what it is to be woman.



## De Mí

*The Crow's visual perception*

[www.demiart.co.uk](http://www.demiart.co.uk)

De Mí is a London based painter, singer and songwriter born in Italy in 1980. His recent work is characterised by a remarkable intervention between surrealism, abstract and pop art developed in the production of portraits as a compromise between the unreal and the pure, using a more naive approach. The subjects chosen which participate in the process exhibit their nature under the predominant influence of the Moon, painted on most of his work from 2004 onwards and which also confirms the identity of the painter. Also remarkable is the use of glitter, special paint and a variety of different materials to create sparkly and vibrant effects.

For this exhibition two paintings are shown, and a 'bare' Full Moon in the Espacio's lower floor dark room.



## Cliff Docherty

*Covered Flesh*

[www.cliffdocherty.com](http://www.cliffdocherty.com)

"Flesh. It carries us around. It is both a container of what is inside and a reflection of what is outside in the way we cover it and dress it. I am intrigued by its shape and diversity because, truly, we are far more individual and unique unclothed than clothed however we may choose to express our personality through our choice of colours, shapes and patterns in our everyday wear. Flesh can be hidden, can be used as a canvas, can be added to, can be made into abstract shapes and can confront us. I explore all of these ideas, a man's piercing, something artificial and unnatural out there for all to see, and yet his genitals, completely natural and human are hidden by taboo and social norm. I choose too to show a naked self-portrait, a deaf man only really naked when his hearing aids are removed and is left vulnerable and isolated from a world that vanishes when his flesh is no longer aided by technology."

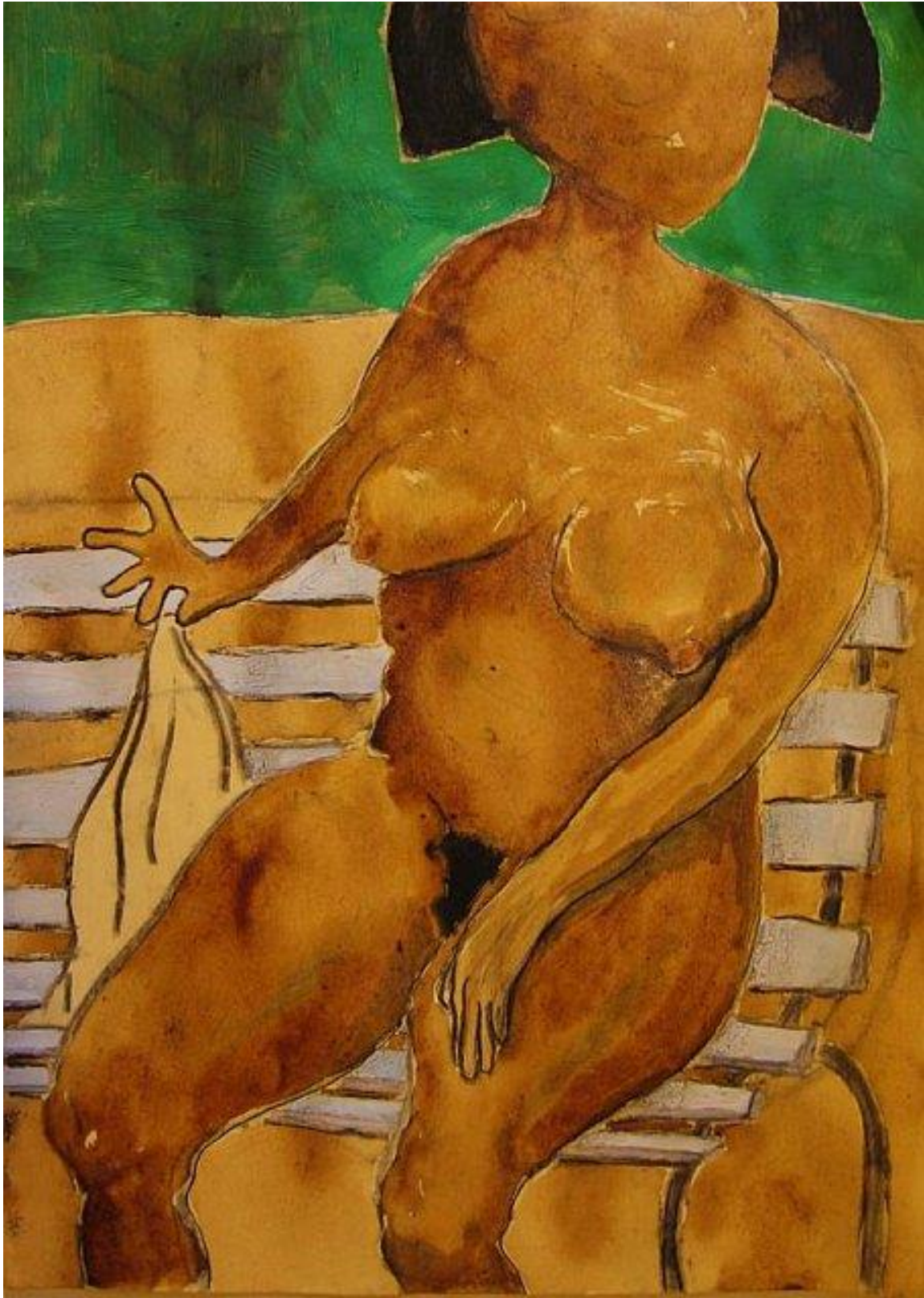


## Beth Gadd

*Live the dream*

[www.bethgadd.co.uk](http://www.bethgadd.co.uk)

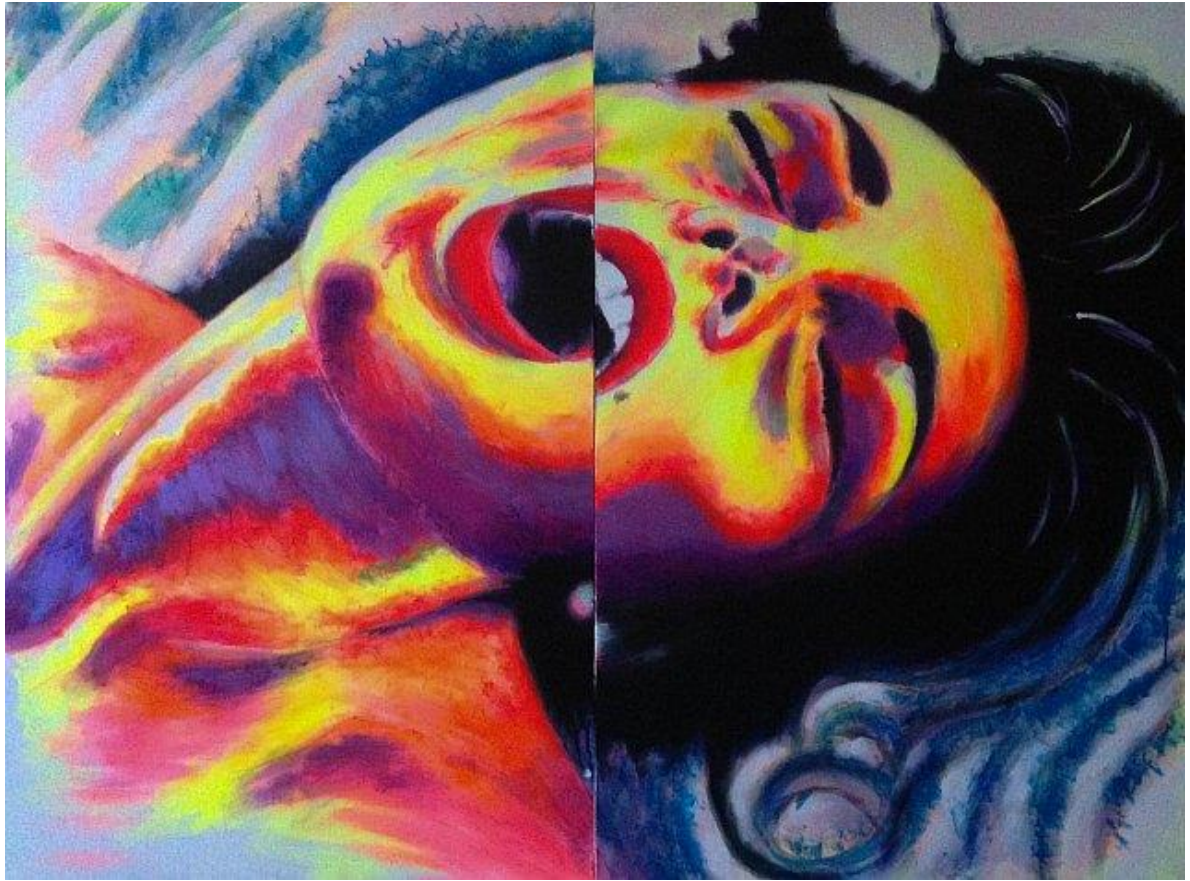
“My practice investigates social phenomenons and constructs that have been influenced by the media. For this show I have explored size issues, using Barbie who, if a real person, would suffer huge health issues related to her size (*Live the dream*, 2010). My second piece relates to body dysmorphia and the rise of cosmetic surgery, and uses quotes from sufferers (*I'm pretty*, 2013/14).”



**George Gkrekas**

*trAgeioFws*

[www.flickr.com/photos/ggrekas](http://www.flickr.com/photos/ggrekas)



## **Goojee**

*a splitting headache*

[www.goojeeart.com/index.html](http://www.goojeeart.com/index.html)

“I believe art must exist in a social context and as such it must open a dialogue with the viewer whether it be pleasant or not. The artist’s role is therefore to express our social condition in an objective, non-judgemental context. My work thus attempts to portray and mirror the full range of our emotions and to capture the essence of what makes us human.”

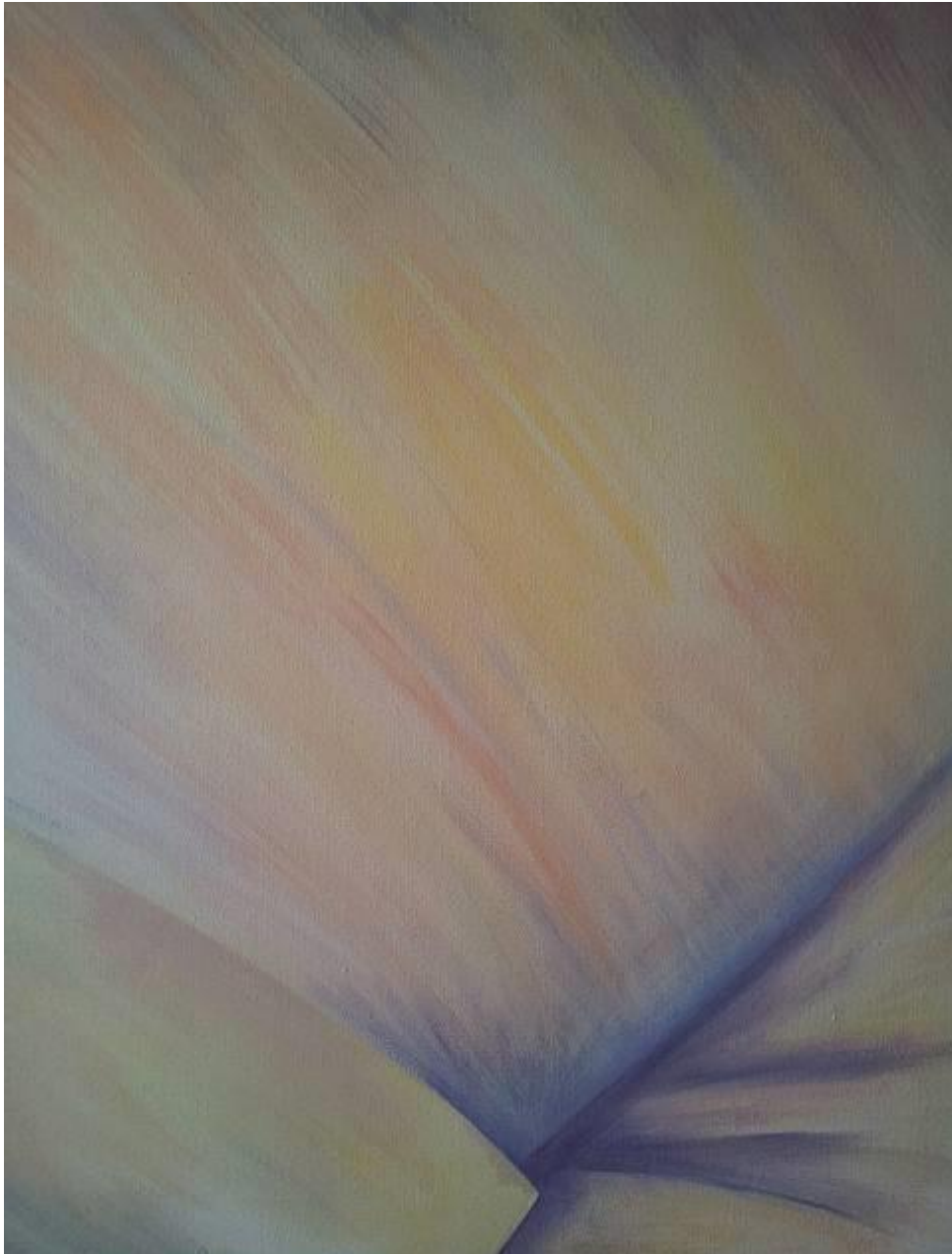


## **Roberto Grosso**

*The Bad in Each Other*

[www.robertogrosso.com](http://www.robertogrosso.com)

Roberto Grosso's artworks are inspired by music and the artworks he chooses have a common theme within the lyrics that follow the sensuality of our human nature, even in the most controversial way.



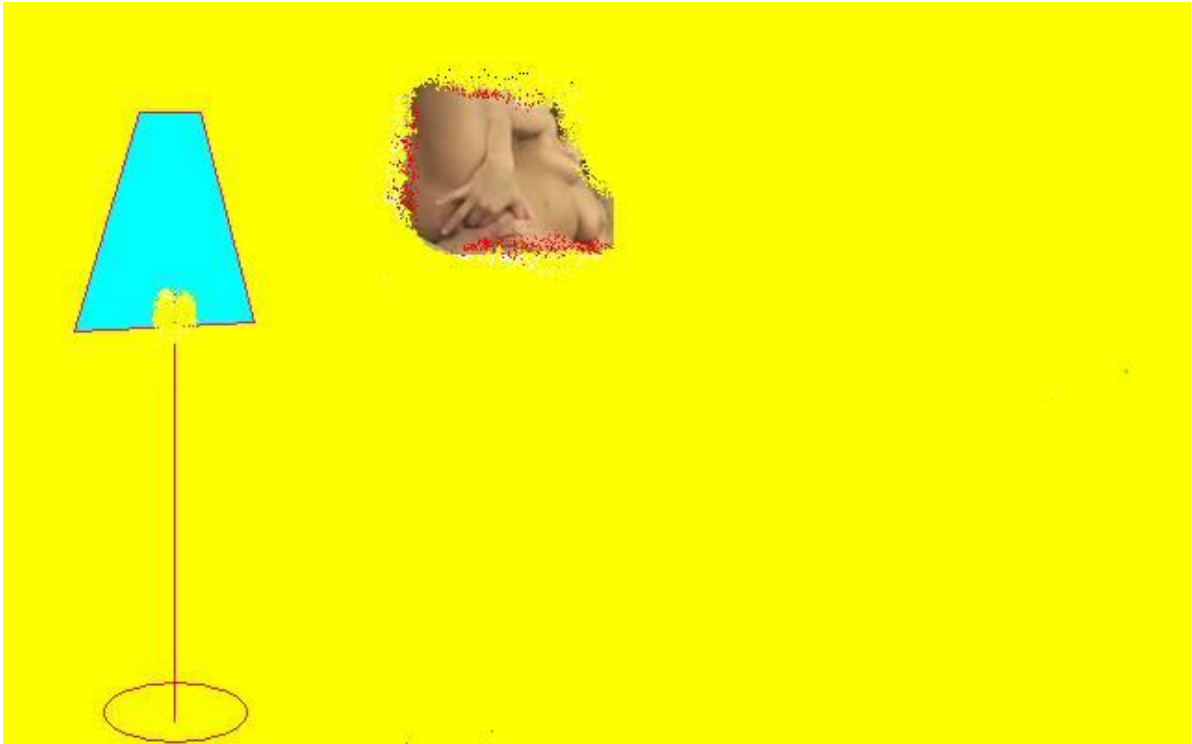
## **Ellen Jewell**

*Rediscovery 2*

<http://collectedreflections.blogspot.co.uk>

In the modern world women in particular feel they have to adopt many different roles. They must always have the perfect career, the perfect relationship, the perfect family, to look perfect, to act in a perfect way. We strive to meet these unrealistic aims while dealing with day-to-day pressures and smaller simpler things get forgotten.

These paintings are a reaction against all the negativity and self-doubt when perfection cannot be reached. These paintings are a rediscovery - after marriage, babies' death and loss. They are a rebirth, deciding to live again.



## **S R Jimmy**

*The benefit supervisor masturbating*

[www.facebook.com/groups/139228619444090](http://www.facebook.com/groups/139228619444090)

“Human flesh has always been a great source of inspiration for creating Beauty; i.e. Art since the beginning of human civilisation. I have also chosen that source for my works and thus want to capture our time through its inner and surface levels of meanings. My works for this show (I said for this show since I work in eclectic mediums) try to resolve the conflict between Mind and Body when Body has been separated from Mind by the aggression of consumerism. Human flesh from my works wants to communicate the mind of the audiences. “



## Jo King

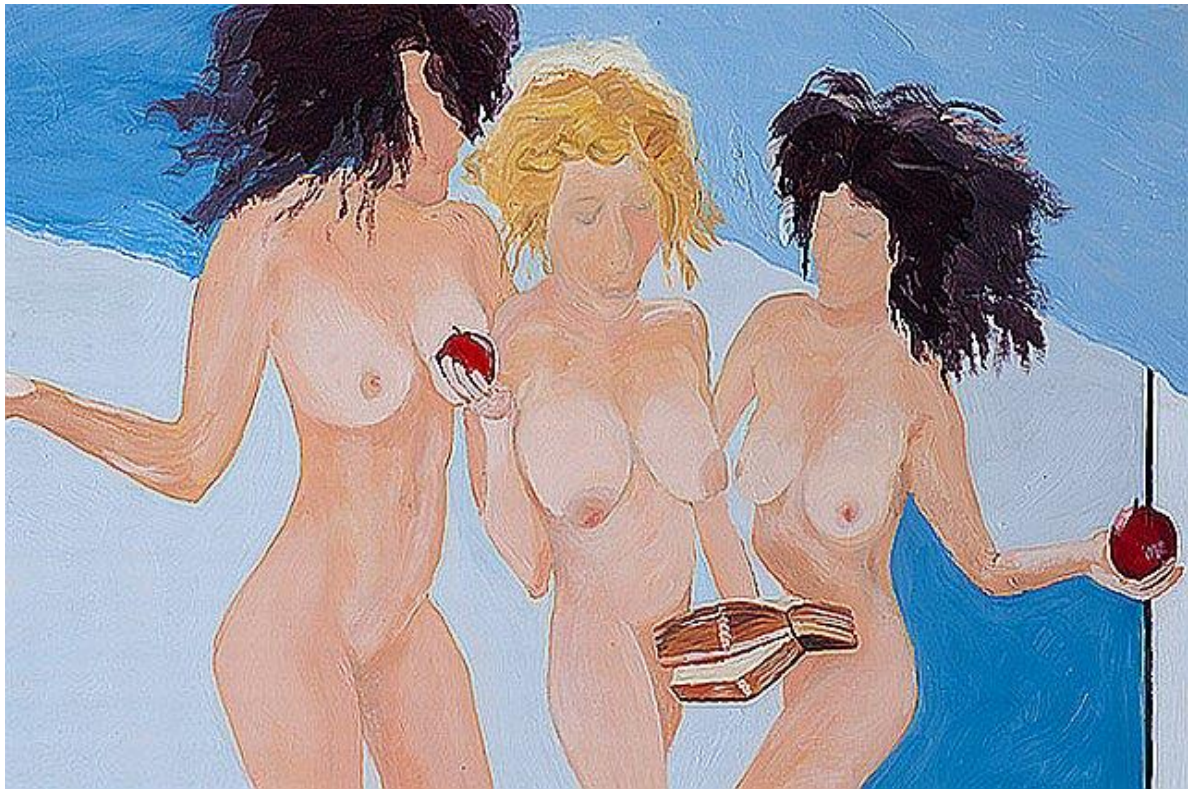
*Threesome*

<http://johnkingsart.com>

### The Erogenous Sculptures

Voluptuous and erotic to some, offensive perhaps to others, these are, in a sense, incendiary devices. You can appreciate them as beautiful abstract forms, or a celebration of sex, or if you are brave take them as rage against political correctness. They wickedly caricature our culture's obsession with aspects of male and female anatomies. They are rude, sexy objects that call into question society's obsession with sexualised imagery perhaps, or then again perhaps they are just erotic. In either case they are mischievous. Enjoy.

They are traditionally fashioned from plaster. Similar ones can be made. Resin or bronze versions are available at greater cost.



## **Susan Lizotte**

*Three Graces*

<http://susanlizotte.com/artists.html>

“Flesh seduces, repels and surprises us. It is defiant both as subject and as object. Female flesh shows how the viewer's attention may be consumed by the subject matter. My paintings explore the role of flesh in female imagery, censorship and the inflexible restrictions imposed by society.”



## **Iona Magnus**

*Save the last dance*

<http://ionamagnus.com>

Iona unleashes her truth through imagination and fantasy, colour and texture. Her unique style and willingness to bare her soul gives us permission to tap into our own feelings as we journey with her through a section of her day or life.



## **Nadia Nervo**

*Susy*

[www.nadianervo.com](http://www.nadianervo.com)

Nadia Nervo is a London-based artist using photography, video and performance. Nadia's work revolves around people, she is fascinated by the relationship and personal interaction that evolves with each individual she works with.

Themes Nadia has explored include femininity, identity, beauty, gender, images of the body, women's portraits, pregnancy, legs, feet, high heels and dance.

The series seek to explore nudes in pregnancy, celebrating largeness, roundness, fullness. The photographs are about being big, and seeing the beauty in getting bigger.



## **Agnieszka Niklewska**

*Lies of Flesh*

<http://vimeo.com/niklewska>

Agnieszka's performance art *Lies of Flesh* concentrates on human body. This performance shows how a thin layer of lie can change human perception and how we can manipulate our image.

"The outer layer of body is like plain canvas. We can change our visual appearance. Our body is a perfect area to play some games between lie and reality. Natural flesh can be changed by artificial coating. Welcome to the world of lies."

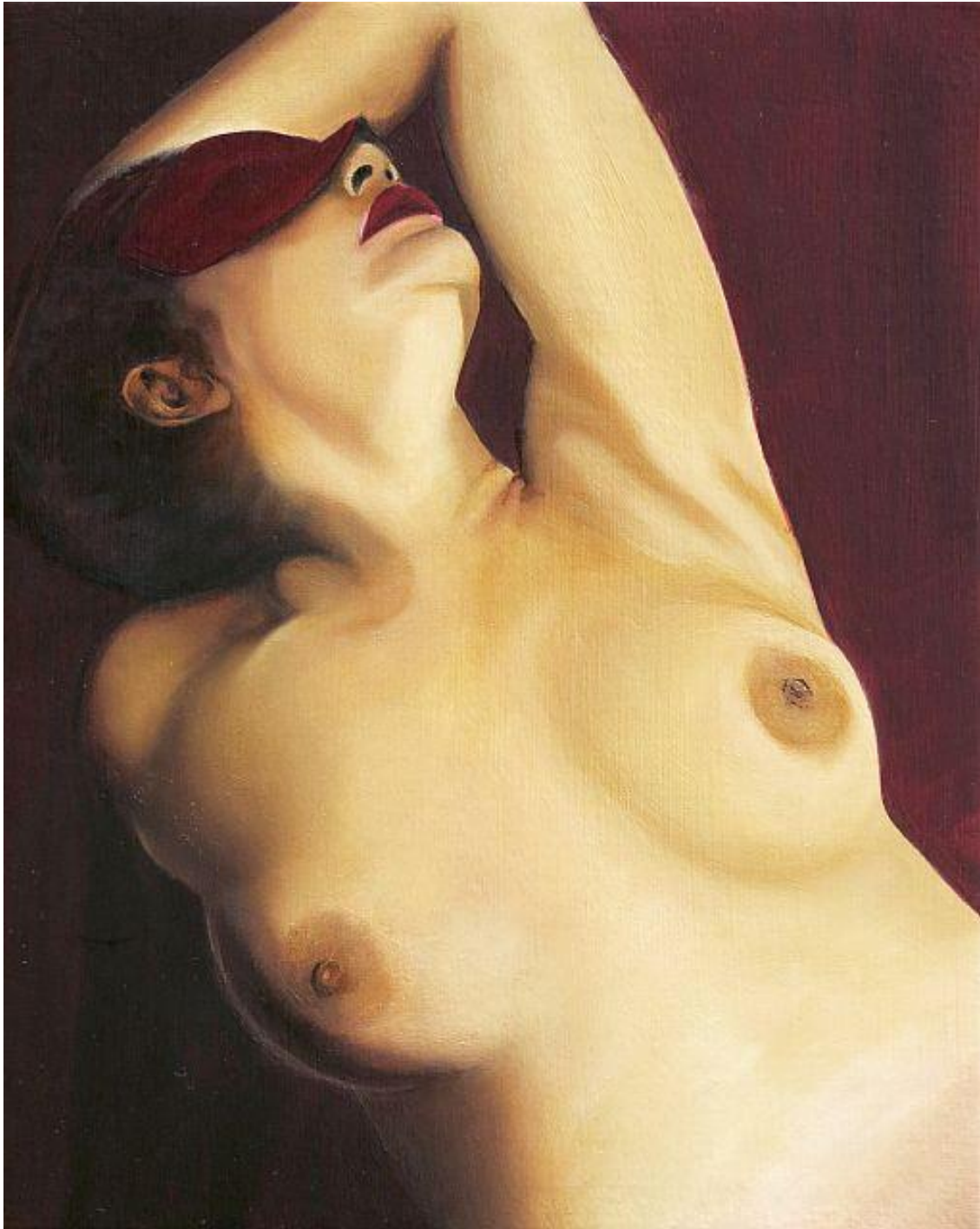


## **Alex Orlov**

*Sexual contact no. 1,436,212*

Alex Orlov is a Graphic Designer and Artist working and experimenting with various media. His paintings at the show are a sample of his visual research of memories evoking from his visits to London gay saunas.

For Alex, human flesh is the byproduct of expressing the dissonance of the paradoxical impersonality of a sexual contact; together with the inevitable warmth and uniqueness of touch and contact with any other human body, wherever and whoever these are.



## **Pia Rogers**

*Fallen Angel*

[www.piarogersart.co.uk](http://www.piarogersart.co.uk)

When the eye is cast over naked flesh it can provoke different thoughts and emotions: Adoration, Desire, Temptation or even Revulsion. Some of us harbour a desire to cast aside our inhibitions, reveal our flesh and be admired. Creating an alter ego and concealing our true identity can help us become the person we secretly dream to be.



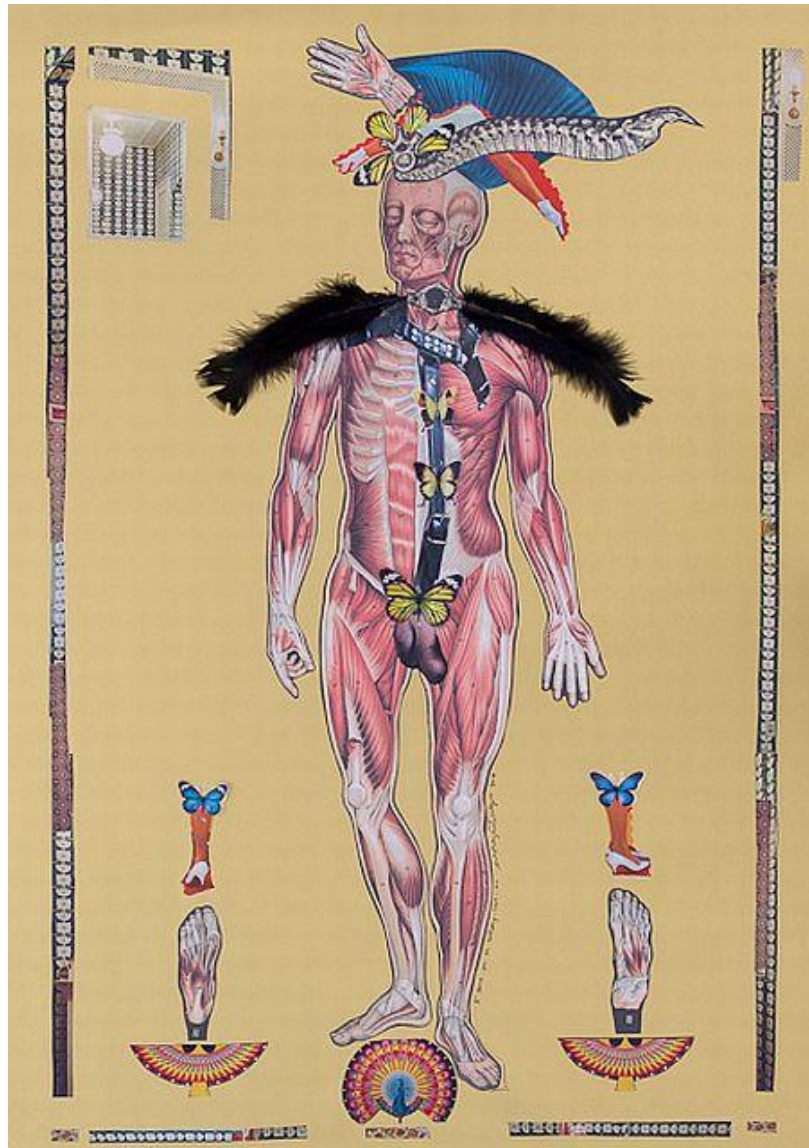
## Veronica Rowlands

*Forgotten Beauty 2*

<http://missvdesigns.wordpress.com>

In recent works Rowlands applies layers gesso over her drawings, building up the illustration, reviving past ideas and adding intricate details, collaged sketches, subsequently painted over in acrylic, pastel and gesso. A nostalgic and vaguely ghostly image starts to take form leaving the transitional process apparent in the final work, she also works with ink, collage and digital media when creating work

Rowlands invites viewers to allow her work to be appreciated also as form of therapy – something an individual can participate in or an act which they would find enjoyable as a child e.g. making a daisy chain or drawing as a child would, or produce a naively drawn character such as a fairy or doll, allowing release of the “inner child” and a free reign to the subconscious psyche and imagination.



## Alexandre Santacruz

*Untitled*

[www.santacruzart.co.uk](http://www.santacruzart.co.uk)

Santacruz's work relates to *Flesh* through the exploration of sexuality, gender and identity, sometimes tinged with humour.

"Flesh as an extension of the soul. Flesh as a language of the body. Always fascinated by flesh and the individual dimension of the body and personalised aspects of desire and lust in the human mind."

"Flesh is an open and clear discourse of our internal thoughts to outside society or simply an illusion shared behind closed doors; flesh transports the mysteries of the body and wraps it in veils of complex rules and intricate thoughts dictated by society and shaped by religion, education, sexuality and morality."



## **Ernesto Sarezale**

*In The Name of The Flesh*

[www.sarezale.com](http://www.sarezale.com)

Ernesto Sarezale presents his own brand of "casually dark erotic magic realism" in a captivating cabaret of words, video, and performance, with perverse nods to fetish, drag, burlesque and the Eurovision Song Contest.

With oblique humour and surreal eroticism, Ernesto dissects the troubles and joys of the "queer body" and the "urban experience" in the 21st century. We are introduced to a unique world populated by self-felating dwarves, detached navels, talking penises, sentimental pornstars, invisible lesbians, fallen angels, Eurovision anoraks, women without willies...

In the flesh, on the flesh, in the name of the flesh.



## Christopher J. Simpson

*The last goodbye*

<http://chrismakeu7.wix.com/cjsart>

Simpson's work is a celebration of the post coital. Of the emotional departure of a much yearned for lover. That moment when you know that you might never experience that level of personal trust and utter fulfilment again.

*The affair* is a painting that tries to capture that moment of exhaustion after an act of passion, satisfaction and total oblivion, of having just given your body and soul to another.

*The Last goodbye* is a painting that has an element of sadness, of letting go and saying goodbye to a lover, it's also a celebration, homage to the physicality of a man, a moment of pure pleasure and adoration, of just looking and admiring the male form in all its glory.



## Konstantinos Vasileiou

*Nude*

<http://kon.4ormat.com>

“In this group of paintings I depict the female form in the moments following the sexual act. My aim was to portray the truth and beauty in such personal moments.”



**Belen Velasco**

*Madre*

<http://belvelascowright.tumblr.com>



## Mia Wilkinson

*3 Women in a Tub*

[www.miawilkinsonartist.com](http://www.miawilkinsonartist.com)

Mia Wilkinson's oil paintings are visceral explorations of certain sexualized female forms. The sensual indulgence with which she approaches the paint is reflective of her subject; female body builders and squashers wrestle on the canvas in an orgy of drips and loaded excess paint. The humorous and light hearted intention with which she approaches her work is not lost, as complex issues of sex and gender are confronted by her brush.

Handling the paint in a fast paced vigour, Wilkinson's paintings have found their own loopy language in which it describes the figures with intense immediacy, whilst still embracing the particularities of the female flesh. Exuding a confidence within the paint she plays with the sculptural solidity of their bodies, which is unapologetic, and intense, yet doesn't become the expected angst ridden expressionism, rather comedic as the figures are increasingly morphing out of themselves and are hilariously exposed as bizarre avatars.



159 Bethnal Green Road  
London – E2 7DG

[www.espaciogallery.com](http://www.espaciogallery.com)

[@espaciogallery](https://www.facebook.com/espaciogallery)

© 2014 Espacio Gallery  
All Rights Reserved