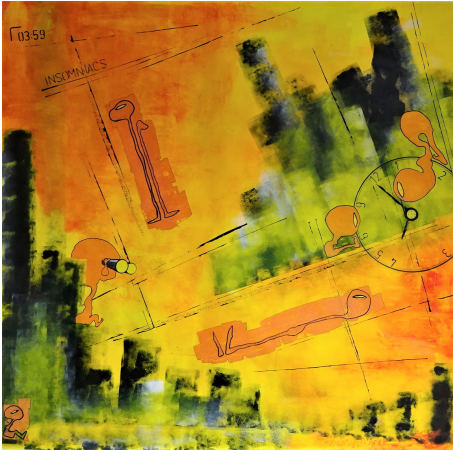


*espaciogallery

159 Bethnal Green Road, London E2 7DG Tel ++44(0) 7815 319073
www.espaciogallery.com / info@espacio.com.
Opening hours: Tuesday-Saturday 1-7pm, Sunday 1 – 5pm



lisa kreuziger from the edge of mind

26 September – 1 October 2017
Artist Reception 28 September, 6-9pm

***espaciogallery** is pleased to present **from the edge of mind**, an exhibition featuring paintings and installations by Lisa Kreuziger. It is the artist's first solo show in London.

Kreuziger seeks to capture varied mental states as well as whimsical moods. While she explores a range of emotion, thought and perception, her work has a profoundly humorous side. Subtle and not as easily deconstructed as a joke, her humor is all part of her approach to emotionally-charged issues of the human condition.

The centerpiece of the show is her latest series **INSOMNIACS**, a series of mainly large-format paintings. They depict a quite stressful side of urban nights, albeit in a humorous and affectionate way. Almost otherworldly figures, flat and hovering over cityscapes, are suggestive of sleep-deprived states of mind rather than of human bodies. Faceless, sexless, ageless, these distorted creatures leave all traces of individuality behind, thus addressing a widely shared experience.

In these paintings Kreuziger blends different pictorial languages, merging abstraction and figuration. Her colors are intense and bright, at times even shrill, and often sharply contrasted.

Also on show are **ORANGE 200** and **MIND GAMES_the_artist_is_present**. Both works deal with idiosyncrasies of the artistic mind. **ORANGE 200** is a participatory

installation, consisting of 200 heavy duty rubble bags, factory-made of orange polyethylene. Each bag is shaped as a sculptural object and is also part of a sprawling structure.

Gallery viewers are invited to get involved with the construction and reconfiguration of the work.

Kreuziger has created an environment that fosters constant change as a social and artistic experience. By elevating audience inclusion over product, she radically pushes her boundaries, most notably giving up control over the execution of the artwork.

MIND GAMES_the_artist_is_present is subversive on different levels. Kreuziger installs her old, worn-out studio overall just a few inches over a little pedestal of wooden painting boards. Alongside she adds a disclaimer saying that any resemblance to actual persons, living or dead, or actual events in the art world is intended.

While the title suggests that the artist is present, Kreuziger is represented by her studio wear. Blurring the boundaries between artwork, persona and self, Kreuziger makes a comment on the (re-)presentations of the self and personality cult in the contemporary art world.

Like all her work, the sculptural combine is ambiguous and offers room for interpretation.

~ ~ ~

Born in Germany, Lisa Kreuziger graduated with an MA from Goethe University Frankfurt. She has lived and worked in the US, the UK and in Germany where she was a Director of Studies for Fine Arts and Languages. Currently based in London/UK and in Marburg/Ger, Kreuziger is a member of the IAA – International Association of Art, Artists Pool London and Espacio Gallery London.

Her work has been exhibited internationally in more than fifty exhibitions and can be found in private collections in the US, Europe and South America.

~ ~ ~

For further information contact the gallery or the artist at lisa@lisakreuziger.com and visit www.lisakreuziger.com for a comprehensive selection of her work.