

## **Sparks Fly on Bethnal Green Road - Expect the Unexpected!**

### **Convergence**

**19-24 February 2015**

**New work from a group of emerging and established artists at Espacio Gallery, London**

**From 19-24 February 2015 *Convergence* at Espacio Gallery** showcases new work from a group of national and international artists living and working in the UK, each with their own perspective and unique approaches to a range of different subject matters.

The exhibition invites visitors to explore the personal, social and artistic relationships between the artists and their work. When the styles meet there are no limits - Expect the unexpected!

**A private view will be held on Thursday 19 February from 6-9pm.** The show continues daily, including weekend, from 1-7pm until 24 February at Espacio Gallery, 159 Bethnal Green Road, London E2 7DG.

The show combines photography, printmaking, painting, installation and mixed media to create a web of new work from artists connected and separated by geography, language, culture and collaboration.

#### **Meet the Artists**

**Moich Abrahams** enjoys combining spontaneity and playfulness with exploring deeper aspects of the unconscious while **Paul Bramley**, a contemporary abstract painter, asks his viewers to navigate their way through a set of disjointed and often poly - rhythmic distractors. His work often appears digital, yet in reality it is entirely hand - crafted.

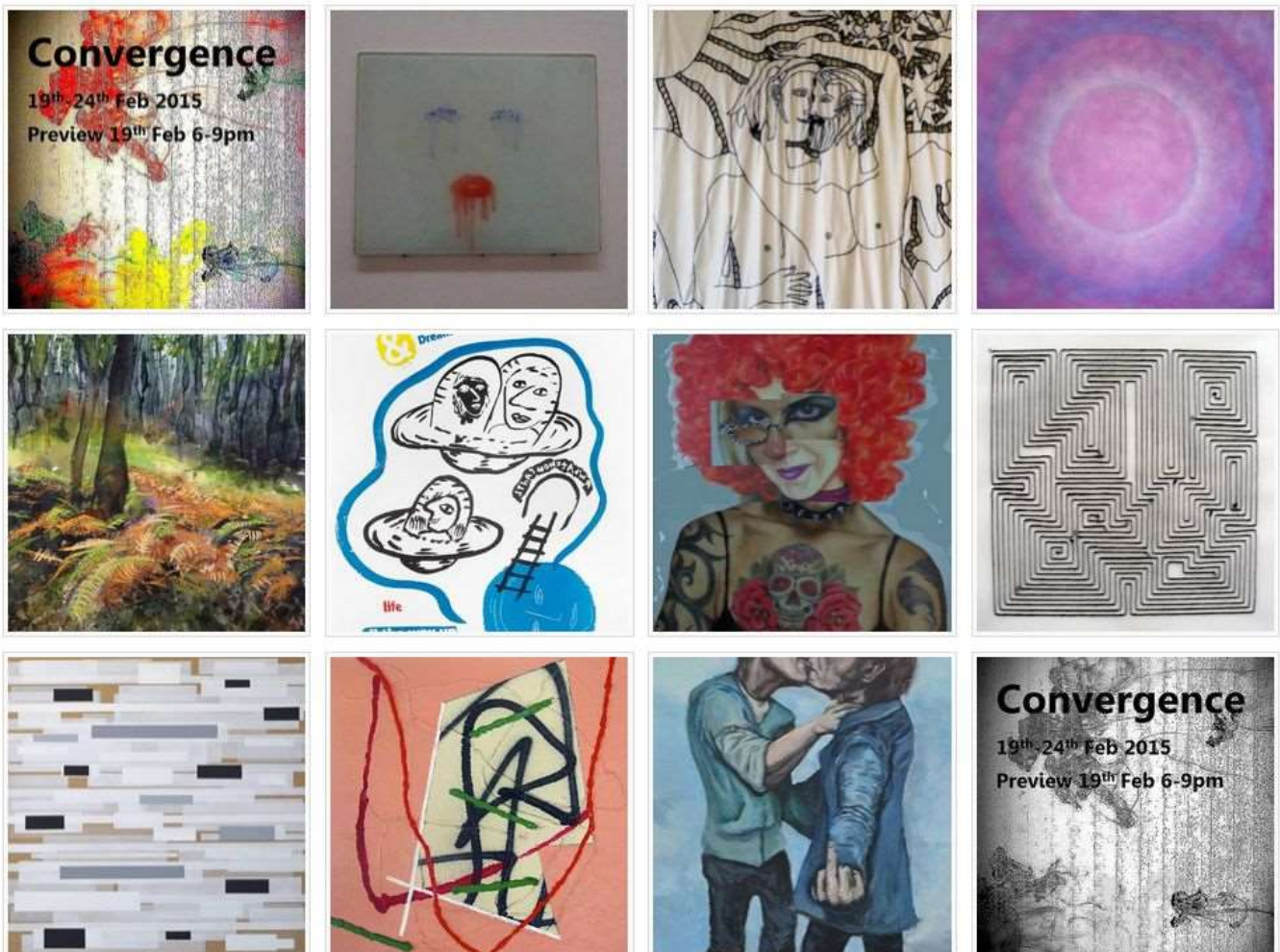
**Steve Buggle's** abstract paintings are informed by what is going on around him, particularly modern architecture with its simplicity and clarity of form. He wants his paintings to give the feeling that something is happening on the surface, behind the surface, beyond the surface while **Saliha Elhoussaini** is inspired by the interconnectivity in natural and manmade systems, whereby simplicity can give rise to complexity. A symbiotic relationship exists between the front and the reverse in all thread drawings. Her work also explores ambiguity between illusory and real depth.

**Beth Gadd's** work deals with the self, and the effect that living in our current society has on us as individuals and social groups. She is fascinated by the physical aspect of this, and responds to issues such as size zero culture, and what is typically considered to be 'ugly'. Gadd often adds humour to her work to help her audience engage on a visual and emotional level.

**Guilhem's** works are done without preparatory drawing – 'My mistakes are entirely part of the process because I like to explore our fragility in life, as we do every day, drawing our lives with our imperfections.' He tries to entirely merge with his doings, taking in his stride, his mistakes and his limits while **Liz James**, primarily a painter, works in a fluid, expressive style to portray the atmosphere of a place and time rather than topographical detail. She also incorporates other materials and mediums and often uses charcoal, pastel, wax and sand with watercolour and acrylic to enhance her paintings.

Outspoken artist, **Ryan Mehigan** (aka Misselaneous), presents the work *A Kiss the be Killed* for dealing with the subject matter of acceptance and opinion on homosexuality, a matter still fighting for equal rights around the world while **Rossella Spoto** draws inspiration from a combination of life experiences and socio-cultural background, actual surrounding, dreams and expectations: past, present and future mix to recreate simple, ironical tales which touch themes that resonate with personal or collective memories, emotions, and taboos.

Lastly, **Justyna Szpygiel** invites the viewers to allow themselves a few moments to stop and look at her paintings. Each painting contains approximately 25 layers of colours – ‘if you spend time looking at them you will start to notice more of the colours. The images are often a result of meditation, moments of deep inner concentration when you can hear your true Self.’



### Espacio Gallery

159 Bethnal Green Road London E2 7DG

Opening times: daily 1-7pm including weekends

**Tube:** Liverpool Street Station, Bethnal Green Station **Overground:** Shoreditch High Street

**Buses:** 8, 388

[espaciogallery.com](http://espaciogallery.com) [facebook.com/espaciogallery](https://facebook.com/espaciogallery) [@espaciogallery](https://twitter.com/espaciogallery)

###

For further information and/or interviews, please contact Carlos de Lins on 07815319073. Sample images of artists' work are also available on request in jpeg format from [info@espaciogallery.com](mailto:info@espaciogallery.com)