



***espaciogallery**

24 - 29 July

DUALITY

Curated by Ana Cockerill

Duality is the condition of being two, of having two parts usually with opposite meanings, two splitting parts stemming from one unit like the existence of good and evil in human nature.

Duality is present in the enigmatic nature of mankind - up and down, peace and war, love and hate, etc. The idea of opposites (Yin-Yang, the union and harmony of opposites) has existed in both Eastern and Western philosophy since ancient times.

Duality has been farther examined, it has technical meanings in geometry as well as physics, and it can be challenging. However, for this show we aim to get into a playful, free-spirited investigation using art and a great dose of audacity!

Participating Artists

Swaroop Biswas	Les Lismore
Kevin Derbyshire	Lawrence Mathias
Liz Derbyshire	Carl Meek
Luciana Duailibe	Mark F. Nelson
Carla Fleck	Nicholas Peart
Chris Francis	Pascale Pollier
Gaëlle Garbani	Justine Roland Cal
Bryan Green	Silvio Severino
Niki Hare	Sharon Sondh
Kevin Jackson	TAO
Liz Kent	Terryfy
Marina Lewis	Sinclair Watkins
Dong Li-Blackwell	



Living

Swaroop Biswas

Swaroop, who is based in Hyderabad, India, states that “There is no one city I could live and paint in all my life... I need to keep travelling and meet new people... Life is too short to not move and experience what life has to offer.”

The majority of Swaroop’s works in this series have symbolic ‘gestures’ in them. He not only uses images of gadgets but other elements such as credit cards, keys, wallets - things that in today’s urban life we can’t do without. He employs these objects as symbols for the extended human presence, indeed, for him it is the domination of these ‘trappings’ of urban life that drives out their very identity and where his ‘masks’ take over.

He has experienced that ‘rat race’ himself, and speaks of its ‘endless and constant rate’ - the speed of life being such that life itself appears left behind until physical realities catch it up, to remind one of the lost time. He explores urban life and its impact on human character and the whirlpool created by the larger-than-life insecurities, the urge to attain steep goals, and the unending quest for more of everything.

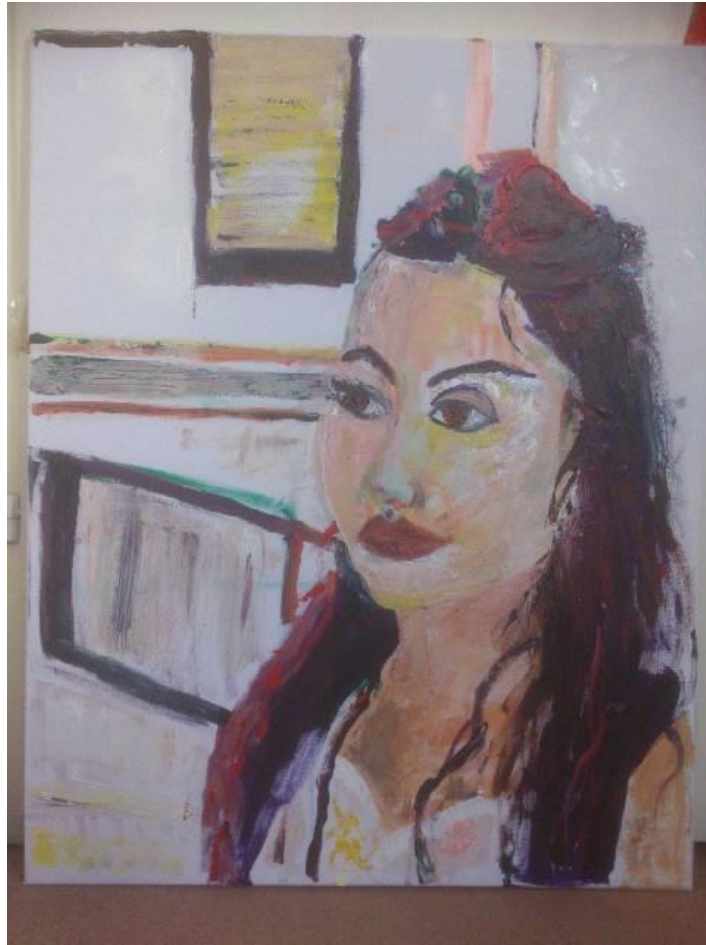


Untitled 1

Kevin Derbyshire

Kevin's current work is mostly related to feelings and subconscious images. He investigates with a variety of materials and techniques, and has a passion for watercolour, inks and silicone sealer.

His exhibits in this show are two paintings, *Untitled 1* and *Untitled 2*, which emerged from subconscious associations with duality. These images are both done with watercolours on Arches paper, with much scraping - particularly on *Untitled 1*, and a heavy water application - particularly on *Untitled 2*.



Issy

Liz Derbyshire

Liz Derbyshire's portrait painting was done in conjunction with a collage of the same model – Issy. By making the works concurrently she mirrors the duality of different lives – the physicality of cutting, tearing and the spaces left behind being a metaphor of human loss through grief, migration or family separation - all aspects of life occurring as you view the art works.

The beauty of painting another person is perhaps, a heightened awareness of two individual perceptions of the world in a manufactured, intimate existence with each other. The feeling evoked is an intense quietness, the unspoken acknowledgement of two people with their different thoughts sharing human solitude.



The Banquet

Luciana Duailibe

Inspired by *The Banquet of Plato*, Luciana Duailibe's performance creates an atmosphere that reflects upon the existence of duality in human nature. It examines feelings and behaviour that are independent of the influence of culture.

'Are we born good or bad? Are our deepest thoughts concerned with peace, happiness and love, or, are we most of the time, jealous, mean and vain? '

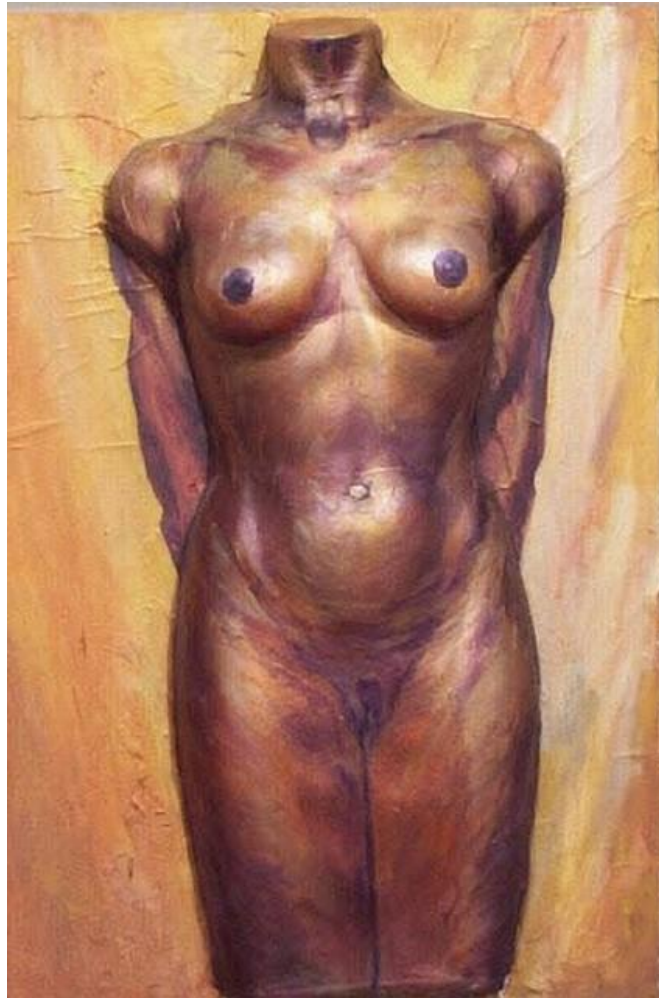
Following through these themes, *The Banquet* explores the ancient indigenous faith of 'feeding our souls' with knowledge about the good and the evil.



Raspas

Carla Fleck

Carla's photographs come from her *Raspas* series. These images are captured throughout London from ripped and abandoned advertising posters which are generally ignored and perceived as worthless leftovers by those passing-by. In her photographs, the objects become fragmented and magnified, and are given new meaning by revealing their hidden beauty and secrets - you will find faces, monsters, places, whatever your imagination leads to, with a resultant duality produced within their abstraction.



Noire et Or

Chris Francis

The duality is that the substrate or surface for representing the two figures, *Noire et Or* and *L'Instructrice Gymnastique*, is an idealistic retail display which created controversy due to 'Size Zero' promoted by the world of fashion including anorexia and bulimia.

However, in both exhibits, we have realistic portrayals of real women's bodies using metallic acrylic paints mixed with conventional hues to not only define the realism but suggest a cast version reminiscent of bronze sculpture - another aspect of duality.

Finally, though is the ambivalent titling of the works - meant to be a satire on the preciousness of some observers in the art world - to give them a French nuance.



Blue Eye

Gaëlle Garbani

Gaëlle is an autodidactic painter whose inspiration and focus are on the human form. She portrays the iconic parts of the body that evoke sensuality and have been commonly used as erotic symbols in pop culture, from art to fashion, to marketing; where 'sex sells'. Inspired by Pop Art, colour and texture is central to Gaëlle's work, her paintings being executed with a high level of detail, a bold approach, and a vibrant and contrasting palette. Upon close examination, the layered detail creates a real sense of depth and invites the viewer to immerse themselves within the work by pulling their eyes 'through' the canvas.

For Duality, Gaëlle presents two paintings from her Iconic *Body Parts* series, both of them illustrating her dual sentiments towards the US. Having lived in California during her youth, the country holds a special place in her heart, though she is sadly and deeply disappointed by its actions - what it has become, and the image it portrays to the world. The selected paintings depict her co-existing feelings of great aspiration, and yet, also of desolation.

www.facebook.com/GaëlleGarbaniArt

Bryan Green

Bryan is a sculptor and a poet. The work he exhibits in Duality combines sculpture and poetry and can be presented by his own verse, as seen below.

The basis of optimism is sheer terror, Oscar Wilde.

Bryan Green
seems to be hiding from unknown, unreal, imaginary
 (he hopes)
 forces
he is fighting back from time to time
 with all his might
 which isn't much
 against such odds
little forays into dubious territory
 looking this way and that
 testing the ground
 it is a losing battle
he will - like all of us - be 'got' in the end
 he has nothing to declare
Green's works are hidden and displayed,
 a gregarious outsider
 in the lapels of his coat
 in the rim of his hat
beneath the leather of the toe caps of his shoes
in a secret panel at the back of a brief case
 and so
 on
 here
encased unsuccessfully in a book
 broken into
 in a public display of bravado
lies the pathetic explanation of why he has placed
 in a gallery of Art
a little pillow upon a larger one



The basis of optimism is sheer terror

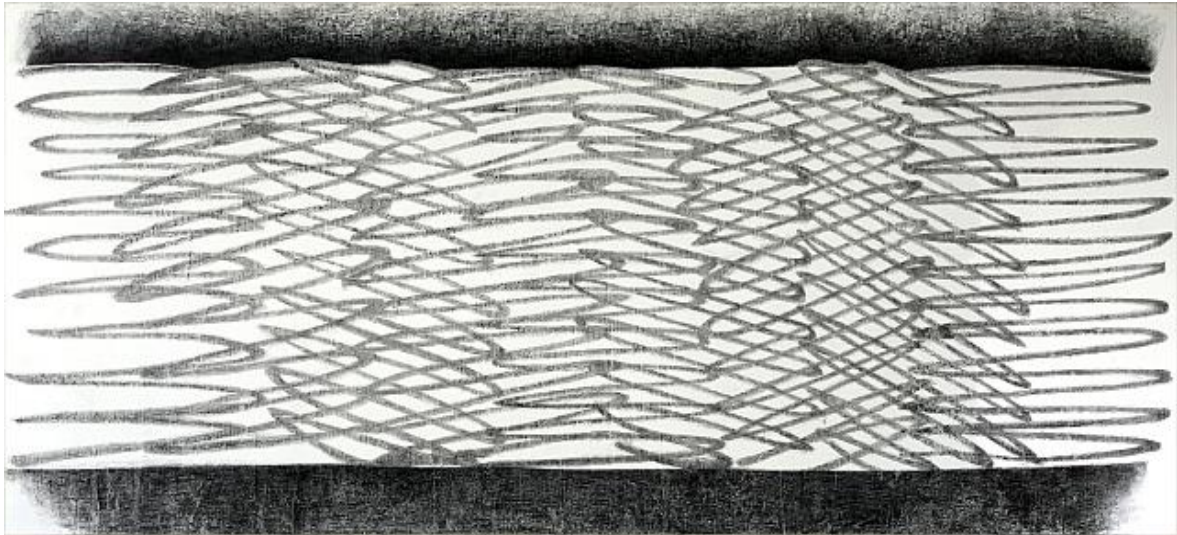


But I couldn't

Niki Hare

Niki Hare often uses text in her paintings, both for the meanings of the words and for their shape and structure. A work may start off with a message or a thought, but as the words layer up and come together, the work becomes a painting within itself, the colour and form gains more importance.

The two works selected for Duality have slightly despondent messages within them, but any negativity is blasted away with blazing bright colour and energy. This duality within the work conveys both the 'light at the end of the tunnel' feeling, and also the importance of not taking oneself too seriously.



BAR (from the CUBAdisco)

Kevin Jackson

The *CUBAdisco* series of work probes the gap between what can and what cannot be said.

BAR is the latest in the sequence of works began in the abandoned quiet of a shaded daylit disco on the Atlantic shore of Cuba. Everything was there but the missing element of night time which came in due course, and was the inspiration.

The missing element is used like a cosh. It either connects with a thwack or whispers through empty air.

Kevin lives and works in London. His solo and collaborative works have been exhibited and collected internationally.



Somewhere in the middle lies the truth (February Chocolate)

Liz Kent

Liz Kent's pieces play with the notion of either/or, and attempts to hold the tension between opposites and what holds them together in the mind. Her work explores multiple narratives and what happens to our often unrecognised and unacknowledged ambivalences when we make a choice.

Her work investigates fictional and factional narratives around family history and autobiography. For this exhibition Liz has made two pieces entitled *Somewhere in the middle lies the truth (February Chocolate)* and *Somewhere in the middle lies the truth (Winter Bus Stop)*.



Biformity

Marina Lewis

Marina's work tends to focus on, and is inspired by, the moments and places we lose to memory and time. She is concerned about the environment, industrialisation and its effect on the natural world - Man Made versus Nature and the tension between these two elements.

She is further interested in the interconnection of shapes and spaces and how their interaction defines each other, their relationships, and the dynamics of their forces. Her arrangements are schematic, inviting the viewer to move into a space of speculation.



Untitled Lady

Dong Li-Blackwell

The works created by Dong Li-Blackwell for Duality, represents the two splitting parts of beings. In order to abandon the complicity of specific definition, or interpretation, her work is an exploration of wordless secrets in identity, existence, humanity and sexuality.

“Yin-Yang” the most complex Eastern philosophy has influenced Dong’s life and work during her growing up. She was born in 1984 in a traditional Chinese family and moved in to the UK in 1999. After having both Eastern and Western education, she started to use art to criticise the way that society looks into ethnology, humanity and culture.

Her work not only challenges the boundaries of morality; accordingly, it also provides a new way of looking, to breaking the stylised preconceived mindset. In the past, Dong has always rejected the manner of using words to interpret her work; here we can see how her art touches us in a simple, direct way.

www.dongli.co.uk/main



Ali vs Liston

Les Lismore

'Duality - two worlds colliding with a screech of violence, or the gentle envelopment of Yin and Yang. Two sides of a coin with a single surface, the forced antithesis of the eternity of a circle. Duality as a meeting, the spark of life. Every journey starting with a departure, every beginning starting with an ending.'

Inspired by this, sculptor, painter and printmaker Leslie Lismore introduces two works : *// Cornuto*, in carved Ashburton marble, and *You can hear them screaming* , a large scale rubber stamp image on canvas.



How We Cut Our Ties (Still image from video)

Lawrence Mathias

The image is from a music and stills video, *How We Cut Our Ties*, that explores our preoccupation with the afterlife and the inevitable tension between reality and faith. This seems to be an aspect of duality with an increasing effect on how many people lead their lives. However, as there are so many faiths to choose from, an understandable confusion about what the reality of life in the hereafter might be the consequence. The song and video takes a trip through a speculative post-life experience with a recently deceased couple who have teamed up for the journey.

Lawrence Mathias works in various media and most recently has been combining his interest in music and painting with video editing.



Selfportrait

Carl Meek

Carl Meek's work centres around the space that exist between the viewer and the image - the reflection of oneself in the mirror. Looking at a 'true' likeness, there is a confrontation produced in that what is perceived is a reversal and in effect a 'false' image and as such a duality exists.

Primarily working in paint and drawing, Meek's work is produced in conceptual series, each independent and self-contained. His work has been exhibited widely, most recently at the Mall Galleries | London, Espacio Gallery | London, and Place Suisse des Arts | Schweizer Kunstraum | Lausanne, Switzerland, and is in private collections worldwide. He is also participating in a cultural study of contemporary London life organised by the Italian filmmaker and anthropologist Elia Romanelli under Professor Piero Vereni of the University of Rome, leading toward a book to be published later this year.



Cosmos - Renewal

Mark F. Nelson

In his imagery, Mark Nelson indirectly explores the theme of duality by counter-posing duality's binary simplicity with the nuanced and multi-layered inter-play afforded by the flow of multiplicity.

Specifically, his work reveals a concern with light and dark, and the nature of place - home, identity and character - literally and metaphorically. Most recently, Mark has been working on a series of images called *Lumens*. Some of the images have as one of their constituent parts, forms based on a simple house gable-end-shape. These shapes may be seen to correspond to those early childhood drawings of a house, of 'home'. The containing structure of this outline allows for the liquid flexibility of the materials used. The technique employed relies heavily on chance, on the visually opportune collisions of water, ink and paper and the timely interventions of the artist. Each constitutes a snapshot, a moment in this evolving body of work.

marknelson656@btinternet.com



Atlantic - Land's End West (Part Two) 'Pointe des Almadies', Dakar, Senegal

Nicholas Peart

The most eastern and western land's end extremes points facing the Atlantic Ocean hold an enduring fascination for me. I encountered both these points while embarking on an eight months journey through Latin America and West Africa. For a long time it had been a dream of mine to travel to the most western facing part of Africa from the most north eastern part of South America in the shortest distance possible. Originally, I wanted to travel by ship from the Brazilian city of Fortaleza to the Senegalese capital of Dakar via the Cape Verde islands. In the end, that option wasn't possible and I took an aeroplane instead.

The Atlantic Ocean as seen from both of these points is the vast, treacherous, unknown, unpredictable and unforgiving gap between them. Millions of years ago, both continents (South America and Africa) were once connected together. Still, the dual significance of these extreme land points separated only by a vast and deep body of water is something which is more spiritually than geographically important to me.



Voice box in soul

Pascale Pollier

Pascale's work attempts to capture the point where Art and Science meld. An alchemist at heart, her work begins with observation and experimentation; it is, however, steeped in solid scientific research and findings. Her inspiration is drawn from observing the internal and external human body in all its diversity - life and nature in all its beauty, strength, fragility, disease, mortality and immortality. New technologies and philosophies, quantum physics, nano technology, animatronics are amongst her interest and are important in her work.

Pascale's interest in the androgynous, the hermaphrodite, originates from her days as a young artist where the beautiful, mysterious and symbolic illustrations from the alchemists, coupled with an interest in Eastern philosophies, were her first sources of inspiration. Subsequently, her inquisitiveness and scientific mind came into play, and so the medical, physical, social, emotional aspects of being of a third gender were thoroughly researched while she studied at the Medical Artists Association.

Duality is a subject that has always been at the heart of her work. The title and concept of this exhibition has proved to be a great catalyst in returning Pascale, like Ouroboros, to a celebration of her lifelong passion. Thus, she presents an alchemy-inspired sculpture of the Great Hermaphrodite - the chemical marriage of the sun and the moon.



Egypt – The Right to Protest

Justine Roland Cal

Justine Roland Cal's work explores the complex nature of humanity. Her paintings are often colourful and ecstatic, but also suggest darker or more sinister aspects, with tortured and deformed faces evoking the feeling that something more disturbing is being revealed. She captures the vitality and exuberance of life, as well as its pain and sadness.



Untitled

Silvio Severino

Brazilian born photographer, GIF animation and collage artist Silvio Severino makes highly personal pieces. His collage work is based on vintage and contemporary printed images, which are reworked to explore the notions of beauty, gender, and sexuality in today's capitalist society.

Silvio diverts the images away from their primary intended purpose and creates a personal view of the relationship between the urban and the natural world. He further deconstructs the perceived perception of human inter-relationships - portrayed by the media and advertising - and reconstructs them into more powerful images by employing a surrealist style. The resulting works show unexpected images of contemporary culture and iconography.



Been There Done That 1

Sharon Sondh

The core subject of Sondh's work is life; she aims to provoke a sense of ambiguity in the viewer's mind. The main themes that run through her pieces are reincarnation, death and life. Striving to challenge her own methods of doing and observing, she aims to create art that appears pure and raw, yet at the same time bearing some resemblance to a specific form.

She attempts to create an impression of the work being alive even though it seems static. There is a sense of imperceptible growth, belonging to the space, and of filling the space. A crucial factor in all Sondh's work is the notion of individuality, mainly based on personal situations, memories and events.

Sondh tends to use organic materials when creating her pieces and also works into the screen prints as she explores how the two juxtaposed processes work together. She is also fascinated by colour, simplicity, and the process of creating art that evoke certain messages and memories.

sharon.s_3903@hotmail.co.uk



Cobweb

TAO

Tao combines photography with altered and recomposed images to provide a visual commentary on human evolution. In this series of collages - shown here in the Duality exhibition - he explores the dilemma that exists between good and evil; the angel and the devil within each one of us. His work is based on the belief that this perceptual interaction between the two elements defines each action of our existence, and that it is the fight against this that can often lead to madness.



Face

Terryfy

Terryfy is a photographer whose series *Things with Faces (Pareidolia)*, are photographs of objects that resemble faces, and it is as a result of these 'resemblances' that they are given an internal duality. Since starting this series he has realised that they have produced a humorous effect - bringing out a smile on the viewers' own face - that further leads people starting to see the same effect everywhere, and so keeping the smile alive.



Changing Bodies

Sinclair Watkins

Sinclair's charcoal drawings ask dual, contradictory questions about the nature of tattooing by taking tattoos of the three-dimensional living body and making two-dimensional images. It begs us to think about how permanent these marks truly are. They are made by painful machines that mark the body for life, but just like life, the marks change and grow old with us. Wrinkles, age spots, blown out lines and freckles blur the image and change it physically and emotionally into something different. At the same time, tattoos can serve as a tool for protection to prove the wearer's 'toughness' , and as a tool for disarmament as it invites questions from strangers, breaking down normal social etiquette when people want to touch them. The drawings here are meant to raise questions that may lead to ambiguous conclusions.

Duality Expanded
Friday 25 July 7-10pm

Duality Expanded focuses on the works of 5 artists from the current Duality exhibition. Each artist offers a different and unique interpretation around the concept of Duality. Each artist will present slides and/or videos and talk about their work.

Carla Fleck, Lawrence Mathias, Nicholas Peart, Silvio Severino, Terryfy

Exhibition curated by

Ana Cockerill

www.facebook.com/accuratorialprojects

anamar.br@hotmail.co.uk

General support

Carl Meek

www.carlmeekart.com

Online Catalogue

Carlos de Lins

www.carlosdelins.com

***espaciogallery**

159 Bethnal Green Road

London – E2 7DG

www.espaciogallery.com

www.facebook.com/espaciogallery

[@espaciogallery](#)

© 2014 Espacio Gallery

All Rights Reserved