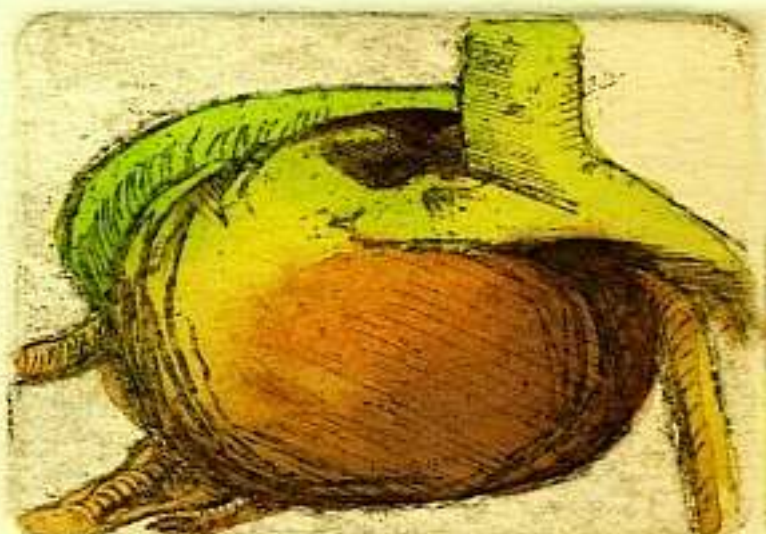


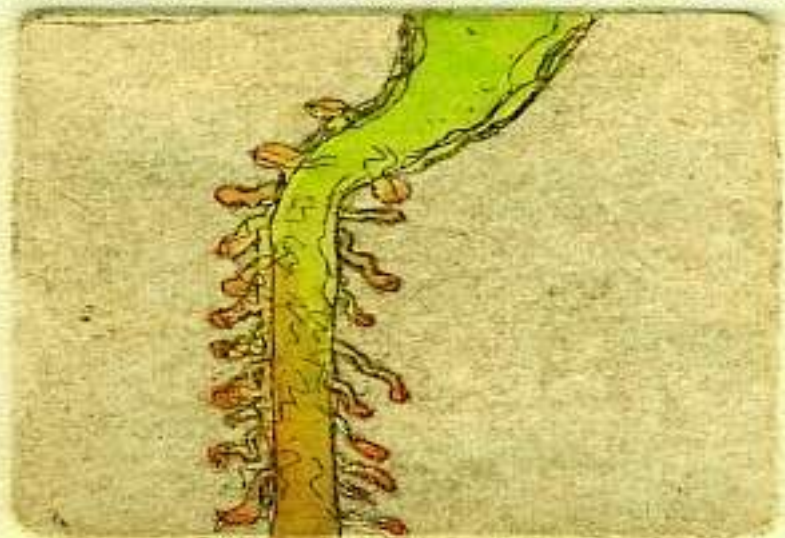
 **espaciogallery**

159 Bethnal Green Road, London E2 7DG

**19th - 31st May 2015**  
**Germination**



**All the flowers of tomorrow are in the seeds of today**



Open daily 1-7pm  
including weekends

Private View May 21st 6-9pm

 **Chelsea  
Fringe**

## GERMINATION

*Germination*, Espacio Gallery 3rd annual event on the *Chelsea Fringe* trail, is an exhibition that showcases exciting ideas from a group of national and international artists, comprising works in a variety of media giving a fresh look into some of the aspects relating to the natural world.

### Participating Artists

Ingrid Anderson	Marta Kisiliczuk
Niccolo Angeli	Philip Leever
Tania Beaumont	Renee Rilexie
Lara Cobden	Gordon M Scott
Sally de Courcy	Joachim Seifudem
Mireia Donat Melus	Carmen Stahl
Oliver Freeman	Michelle Tonta
Laura Gompertz	Teresa Wickstead
Peggah Kashian	

Curated by  
Tania Beaumont  
Laura Gompertz  
Mireia Donat Melus  
Renee Rilexie





**Ingrid Anderson**

*Debris*, Photo on museum paper

[www.ingridanderson.com](http://www.ingridanderson.com)

Moving between painting and photography Ingrid's work explores obscurity and secrecy. This set of images aims to offer an alternative viewpoint on the subtlety of the nature around us.



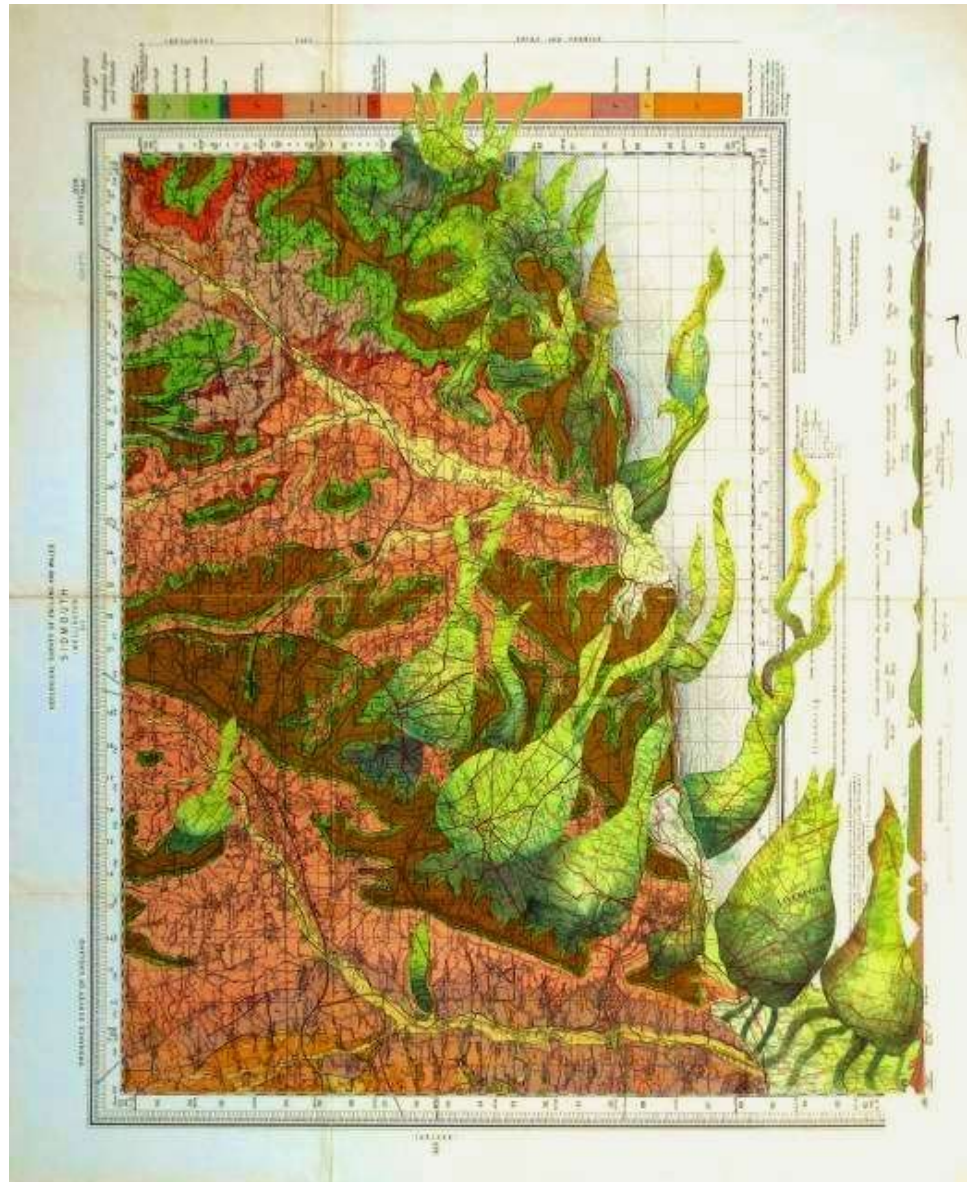
**Niccolo Angeli**

*Ramified Universe 1*, Giclee on paper

[www.nican.me](http://www.nican.me)

Nican is a digital artist who works in the interconnection between art, design, science and spirituality. His 'Ramified Universe' mandalas are part of a bigger project investigating fractal and sacred geometry, as well as the relation between chaos and order.





**Tania Beaumont**

*Sprout*, Mixed media collage

[www.taniabeaumont.squarespace.com](http://www.taniabeaumont.squarespace.com)

A mixed media artist in the broadest sense, using paint, print and collage to produce works with narrative and ambiguity. Recently she has been using cut maps in collage.



**Lara Cobden**

*Bittersweet Reflections*, Oil on wood panel

<http://laracobden.com>

These paintings are a subjective and individual response to the natural world; seeing the fantastical and magical in nature. There is both a stillness and fluidity in Lara's work; in the ordinary – a sense of reverence.



**Sally de Courcy**

*Reformation 1*, Jesmonite, resin, bronze, canvas

[www.sallydecourcy.webden.co.uk](http://www.sallydecourcy.webden.co.uk)

We are constantly exposed to repetitious imagery – the exactitude of modern digital reproduction means repetition often results in visual cloning. Sally's work inverts this causal relationship – it represents a generative metaphor to create difference through repetition.



**Mireia Donat Melus**

*The Tenant*, Textile sculpture

[www.behance.net/MDMelus](http://www.behance.net/MDMelus)

Mireia is a Spanish artist living in London, specialising in sculpture. Her pieces have a strong physical appearance and a very organic aspect. Her work talks to us about the abject, formed by odd shapes with no specific references – fascinating and disgusting in equal measure.





**Oliver Freeman**

*Beech 1*, Oil on canvas

[www.oliverfreeman.me.uk](http://www.oliverfreeman.me.uk)

The ageing and decaying trees of Savernake Forest are a longstanding theme of Oliver Freeman. The trees combine shape, colour and sculptural strength, revealing their quasi biological innards.

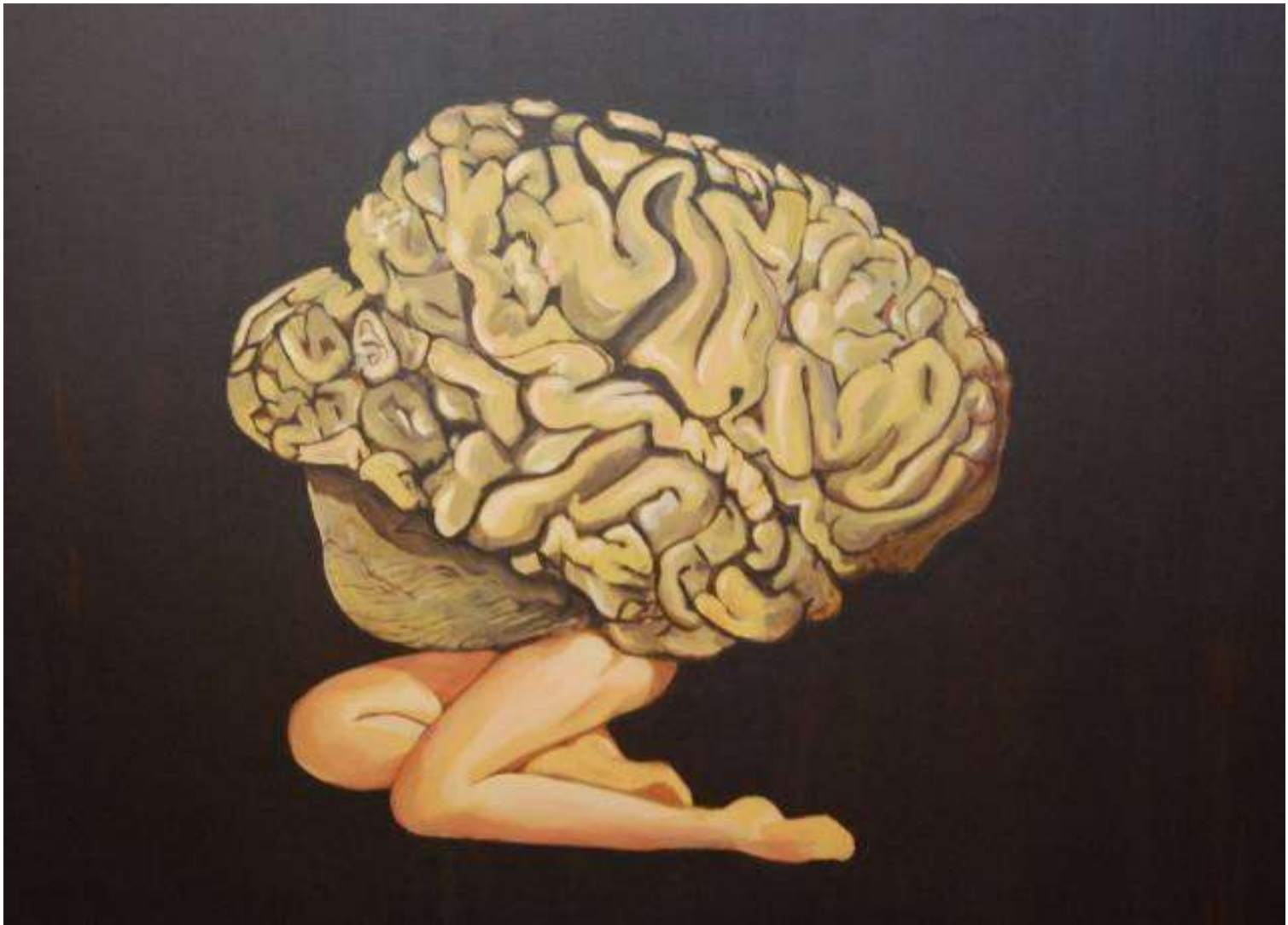


**Laura Gompertz**

*Fennel*, Oil on canvas

<http://lauragompertz.com>

Laura explores the detail in everyday things, concentrating on colour & abstract patterns in natural forms.



**Peggah Kashian**

*Identity on the brain*, Oil on canvas

[www.khashianarts.com](http://www.khashianarts.com)

Peggah's work is highly influenced by Surrealism, semiotics and phenomenology. She focuses on connecting unrelated items, both organic and industrial, to create images that invoke variable meanings.





**Marta Kisiliczuk**  
*Blue waters*, Oil on canvas  
[www.martakisiliczuk.com](http://www.martakisiliczuk.com)

Marta's engagement with and love for the objects she paints is immediately evident. Texture is an important part of her painting, but it is colour and dynamic that really define her work.



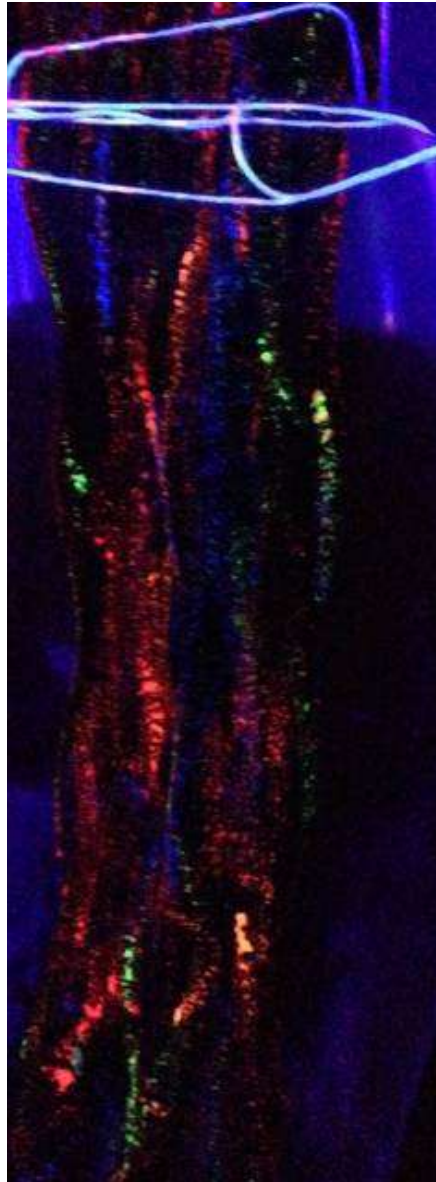
**Philip Leever**

*Eye in the wood*, Mixed media on paper

<https://philipleeversart.wordpress.com>

Philip Leever works in the woods adjoining his studio in Wiltshire, painting, taking photographs, collecting bark, leaves and fungi; later combining these into paintings of a multi-experience of nature.





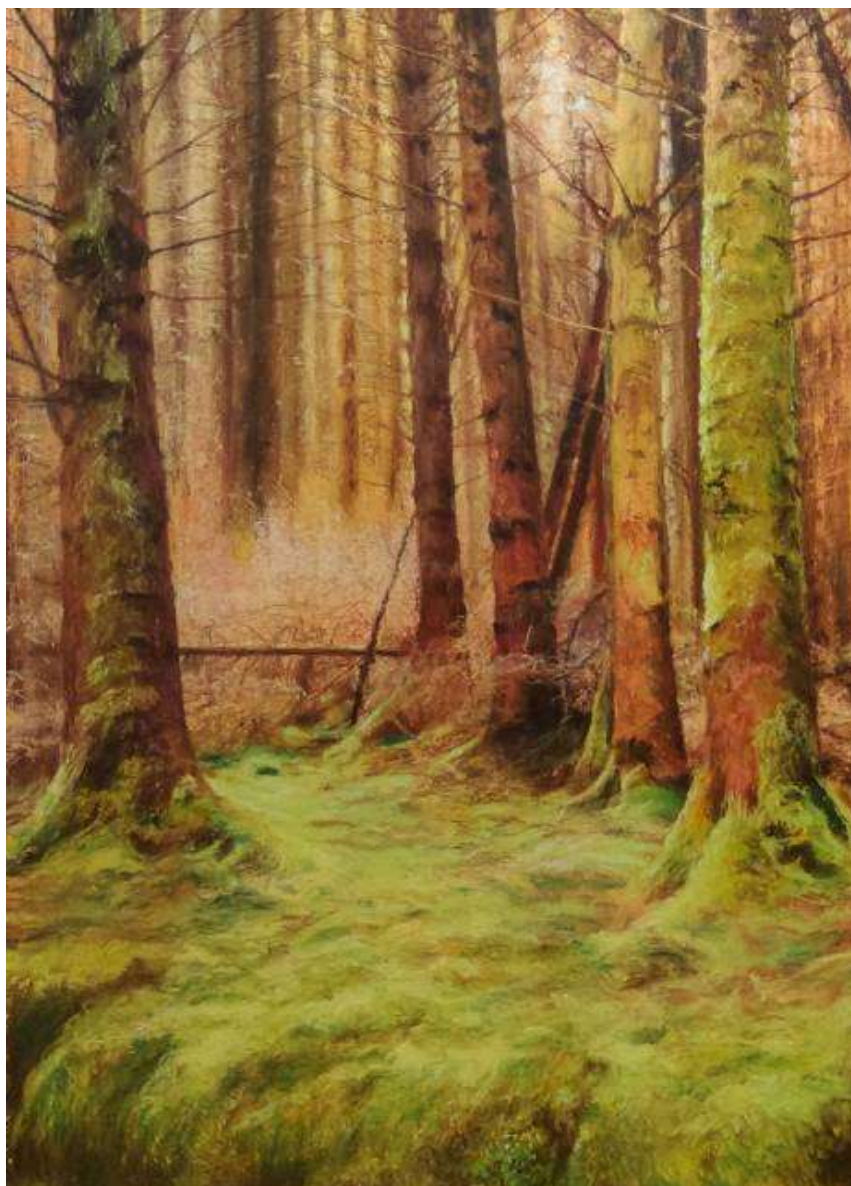
**Renee Rilexie**

*Tree of Life*, Art installation

[www.rilexie.com](http://www.rilexie.com)

An art installation expressing the symbolism of the Tree of Life, human beings intertwine with nature, elements and colourful energy.





**Gordon M Scott**

*The Forest of Garbh Mor, Pastels*

[www.gordonmscott.com](http://www.gordonmscott.com)

These landscapes show Gordon's persistence in portraying a view upon wilderness – landscape without a sign of human context becomes almost mythic in quality. In doing so the numinous become apparent; and inherent within the landscape a pervading mystery.



**Joachim Seifudem**

*Getting closer*, Carved wood & metal

[www.seifudem-sculptor.com](http://www.seifudem-sculptor.com)

His works stimulate melancholy thoughts and show the viewer the importance of living in the now. We marvel at the complex scenes before us, so much going on and so much symbolism intertwined, in the beautiful imagination of Joachim's work.



**Carmen Stahl**

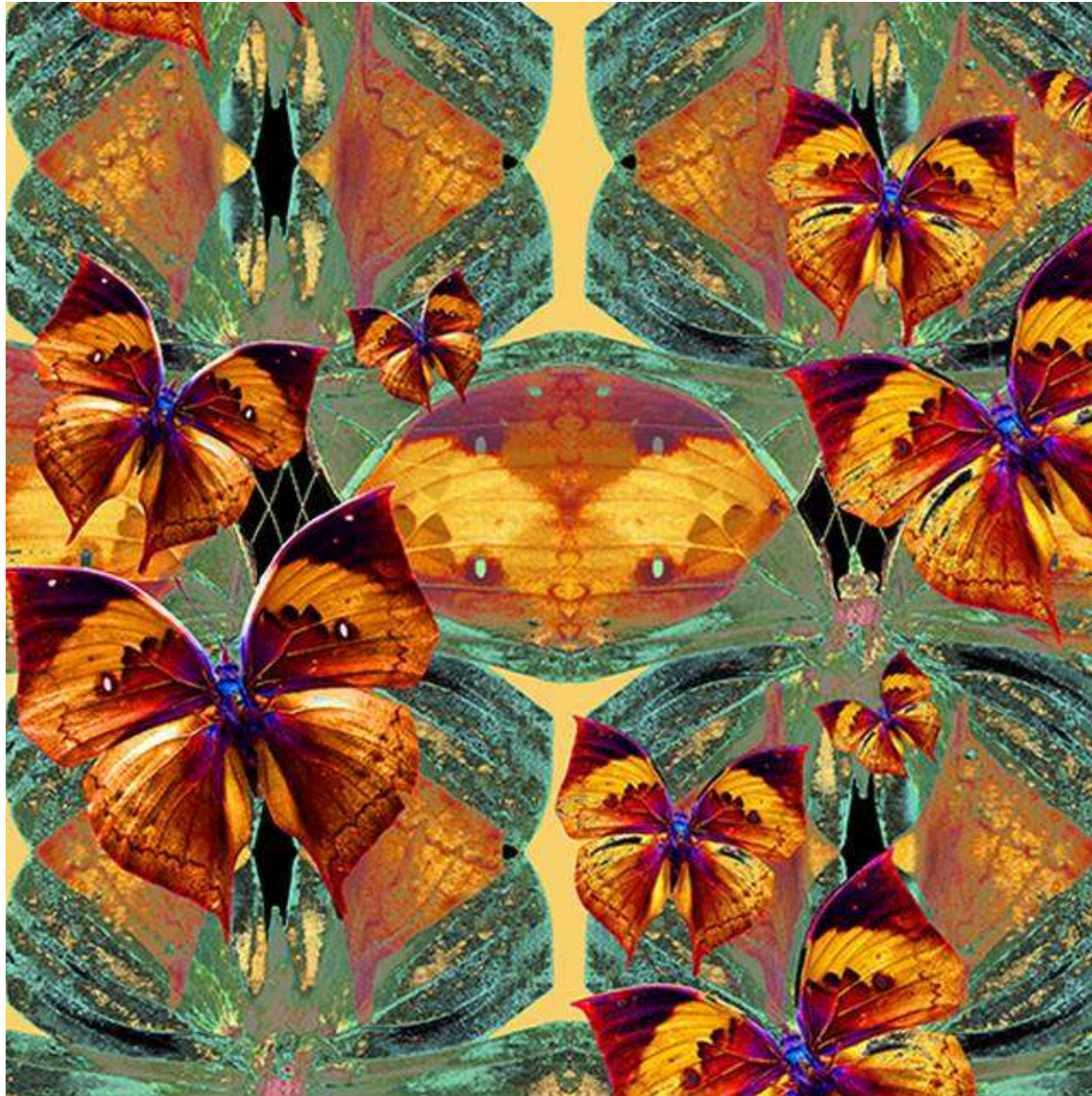
*Landscape Study 2*, Painted paper porcelain, lithium carbonate

[www.carmenstahl.com](http://www.carmenstahl.com)

The 'sublime' in a Post Industrial Age – 'Splott Beach'

Carmen's work questions the experience and perception of places. The romantic notion of the 'sublime' could be revealed in an ever changing Post Industrial Landscape.





**Michelle Tonta**

*Untitled*, Lino print

[www.michelletonta.wix.com/design](http://www.michelletonta.wix.com/design)

Michelle is a contemporary printed textile designer currently studying for her MA at Chelsea College of the Arts, London. Full of vibrant colour and eye catching patterns, her work largely derives from original drawings of exotic flora & fauna, which she translates into digital design, to create exciting & dynamic prints.



**Teresa Wicksteed**

*Enlighten 5*, Oil on canvas

[www.teresawicksteed.co.uk](http://www.teresawicksteed.co.uk)

Teresa situates the conceptual root of her work in a 'Near death Experience'. She uses translucent oils to grow the painting organically within the constraints of a strict layering process.



# GERMINATION

Part of Chelsea Fringe Festival



[www.chelseafringe.com](http://www.chelseafringe.com)

Curated by

**TANIA BEAUMONT**

[www.taniabeaumont.squarespace.com](http://www.taniabeaumont.squarespace.com)

**LAURA GOMPERTZ**

<http://lauragompertz.com>

**MIREIA DONAT MELUS**

[www.behance.net/MDMelus](http://www.behance.net/MDMelus)

**RENEE RILEXIE**

[www.rilexie.com](http://www.rilexie.com)

Online Catalogue

**CARLOS DE LINS**

[www.carlosdelins.com](http://www.carlosdelins.com)

**\*espaciogallery**

159 Bethnal Green Road

London – E2 7DG

[www.espaciogallery.com](http://www.espaciogallery.com)

[www.facebook.com/espaciogallery](https://www.facebook.com/espaciogallery)

[@espaciogallery](#)

© 2015 Espacio Gallery

All Rights Reserved