

IMPRESSIONS

27 August - 1 September 2019

***espaciogallery**



Peter D'Alessandri

My work explores the relationship between multiple figures in a composition, in both a spatial and an emotional sense. I am fascinated by the dynamic relationship between model, artist and viewer.
<http://dalessandri.co.uk>



Judith Bieleto

Judith has a BA in fine art and during her artistic career she has been exploring the energy exchange amongst people, nature and the universe. In her current work she explores the relationship with her ancestral line, their samskaras and impressions that impact her own life.



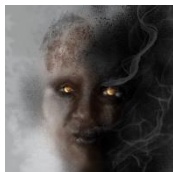
Tonatiúh Bieleto Trejo

A photograph is an ideal way of capturing a fleeting moment. Whatever the subjects, these are snapshot views of what the photographer sees or feels in that exact moment.
www.facebook.com/tona.bieleto



Ronald Hernandez

I am passionate about observing people and capturing intimate or personal moments in my paintings, especially when individuals are on their own. People are their true self when they feel unthreatened to bear all their emotions and thoughts and this is what I attempt to capture and portray through my work. I am very interested in capturing states of mind, such as, depression, loneliness, happiness, sadness and privacy.
www.roheart.com



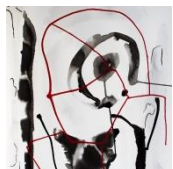
Hebert Koze

Hebert Koze
Brazilian artist Hebert Koze translates his emotions through digital painting to deal with difficulties that life presents.
www.instagram.com/hebertkoze



Juliana Lauletta

Blurring the line between photography and imagination. Multimedia artist Juliana Lauletta creates vibrant, joyful and inventive pictures. The images might look like digital paintings but they are 100% photographs created using long exposure and light painting techniques.
www.instagram.com/julauletta

**Adam Lucy**

The ink flowed natural, organically until forming recognisable entities. 'Dissection' encapsulates the disassembly of my psyche through recent works exploring my past and history. 'Enfante Terrible' a pictorial impression of my rebirth as an artist everyday with every new medium.

www.alucyart.com

**Mania**

Artist based in London, working in a variety of media's usually on large scale large canvases. Composition and colour plays an important role in my practice. I'm not searching for perfection and my art is not necessarily calm or usual but sometimes it can be disturbing and rude. I am in a constant search of ways to expand and evolve my practice using sculpture, installation and digital art.

www.alice-mania.com

**Bru Marie**

With much observation and bringing ideas to life, Bru Marie expresses feelings and everyday situations in her artwork. Using mixed media and playing with layers, she tries to cause an inspiring impact on people's lives.

www.brukamei.com

**Jenny Nash**

This body of work takes its inspiration from two areas of photographic practice. The methodology combines the practice of phototherapy (developed by Rosy Martin & Jo Spence) and Sigmund Freud's theory of Pathography which was developed into a lens based practice of self realisation by Dr. Spencer Rowell. Both practices rely on other people's input whereas my practice is a solo one.

www.instagram.com/sullenriotphotography

**Roy Peterson**

I work with the canvas and paints together to create texture, depth, light and dark, action, speed, calm, whatever is predicted by the elements at hand.

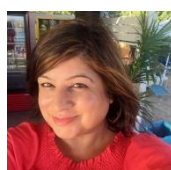
www.facebook.com/artistroypeterson

**Jennifer López-Rateike**

Jennifer's practice has strongly been influenced by psychology, intuitive art and the poetics of alchemical processes, the uncanny and the remote, surrealism and minimalism. The symbolic and cultural values that inspire her belong to the ancient Mayan sages.

**Tsuruko**

Japanese-Brazilian artist Tsuruko connect with nature to share the beauty of everyday life through oil paintings.

**Salma Zulfiqar**

We Are Searching for Life: A short film written and performed by Award winning artist and activist Salma Zulfiqar on the coast line of the Mediterranean. The performance features experiences of women on the move and calls for safe migration - protection of women on the move & in support of humanitarian sea rescue and stopping the hostile environment.

www.instagram.com/salmazeecreative

***espaciogallery**

159 Bethnal Green Road, London, E2 7DG

www.espaciogallery.com

@espaciogallery