



Points
of
View

*espaciogallery

23 - 28 October 2014

The Espacio Gallery displays new work by five painters presenting their diverse views of contemporary landscape.

Points of View explores individual approaches to landscape by this group of painters. Their visual interpretations of paintings and prints show five very different styles of work revealing a wide variety of content. These artists express their creative motives in paintings that span abstraction, symbolism, and reflections of personal experiences.

City scenes, trees and fields, building sites, and vast vistas, together with hidden 'landscape' of the inner mind, show how each artist has reacted to the landscape, through different media, as an expression of their 'Points of View'.

'Each artist demonstrates a strong personal vision with a coherent visual language. There is a collective spirit within this group which joyously celebrates the sensuality of media, the nuance of gesture, and the infinite possibilities this offers.' Mick Kirkbride NEAC

Participating Artists

Sarah Adams
Margaret Crutchley
Judith Moule
Clive Patterson
Cary Whitworth



Sarah Adams

Chelsea Bridge, Acrylic, 30x40cm

www.sarahadamsartist.com

sarah.adams@hotmail.co.uk

My art practice is inspired by my home city of London, and my works take in well known, recognisable views, painted to create a calming, peaceful feel of what are otherwise, crowded and bustling settings. The ever changing, London skyline resonates with me, and I am fascinated by deconstruction, building sites, and regeneration. I capture a moment in time, and how an area of London is never going to be the same again.



Margaret Crutchley

Buttermere View, Acrylic, 54x54cm

www.margaretcritchley.co.uk

margaretcritchley4@gmail.com

Turn a corner, reach the top of the hill, walk out from under the trees and experience that heart-stopping moment as the vista opens up before you. My realistic landscape paintings in oil or acrylics aim to capture that catch-your-breath feeling, through well-planned composition, beautiful colour and painterly brushstrokes.



Judith Moule

Harbour, Acrylic, 34x34cm

www.judithmoule.co.uk

judithmoule@tiscali.co.uk

My work is based on an exploration of Australian and New Zealand landscapes in an abstract form. It is an investigation into divergent and complementary forms; their compositional as well as abstract relationships within the natural landscape. It is also about mark making and records the texture and traces of the landscape, a human experience of the land, rather than its material presence.



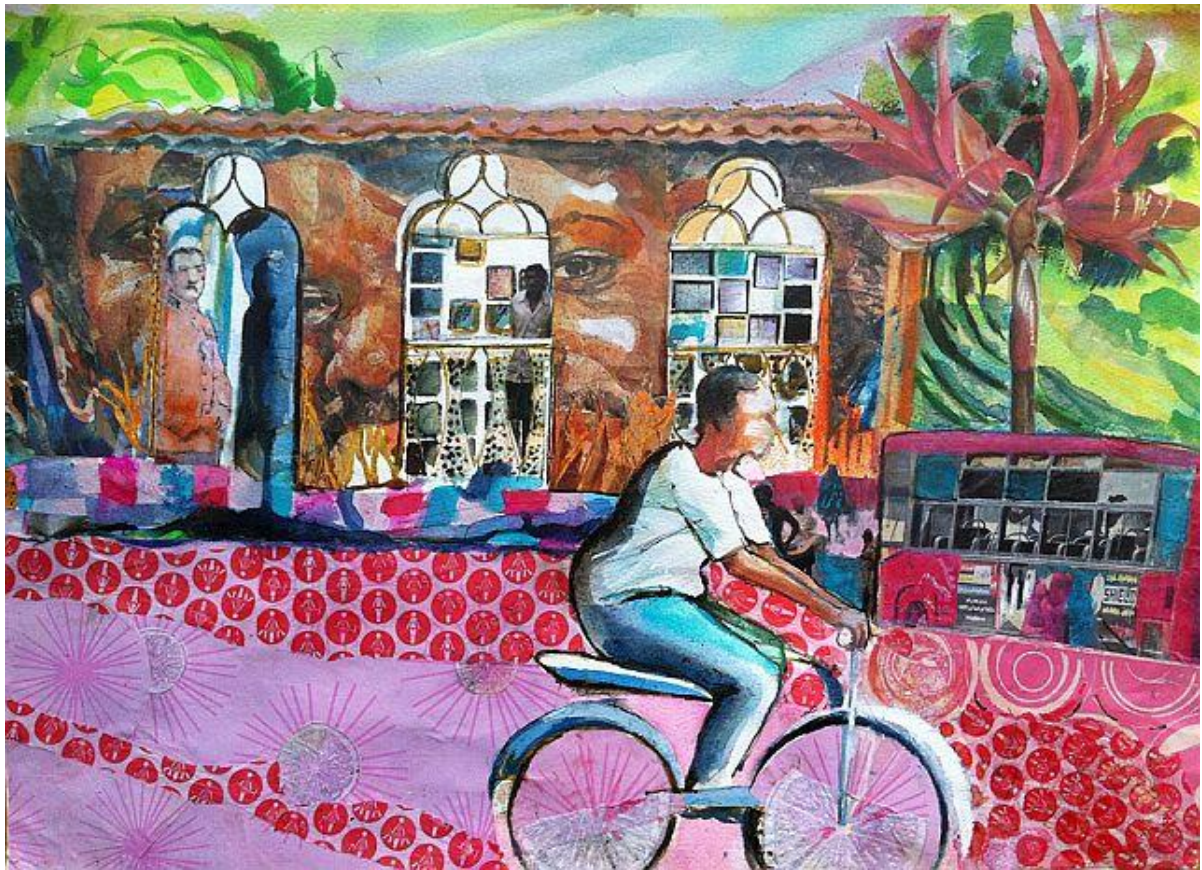
Clive Patterson

Reaching the edge, Acrylic and pastel, 40x40cm

www.clivepatterson.com

clive@clivepatterson.com

My work is a personal interpretation of landscape – it is not a literal facsimile of what I see, but a visual translation of my response to a viewed scene. The paintings and drawings that evolve from initial workings are an emotive response to a certain time and place, not always depicting the complete view, but often taking elements within the subject to create a picture.



Cary Whitworth

Indian man on bike, Mixed media, 68x58cm

www.carywhitworth.com

cary.whitworth@hotmail.com

I use mixed media to investigate personal concerns or current events. At present I am exploring my response to landscapes and environments bringing out the layers beneath the surface appearance - historical, psychological, and cultural. I show people within an environment, ensuring that the image and composition are strong enough to carry multiple interpretations. I play with perception, encouraging the viewer to invent a narrative or imagine further contexts.

***espaciogallery**

**159 Bethnal Green Road
London – E2 7DG**

www.espaciogallery.com
www.facebook.com/espaciogallery
[@espaciogallery](#)

© 2014 Espacio Gallery
All Rights Reserved