

# \*espaciogallery

159 Bethnal Green Road London E2 7DG

## the Portrait show

14-19 April, 2015

Private View:

16th April 6-9 pm

\*espaciogallery

159  
Bethnal Green Rd  
E2 7DG

Pedro Baztan  
Eleanor Buffam  
Helen Campbell  
Laurence Causse-Parsley  
Marianne Frank  
Sal Jones  
Jill Meager  
Maureen Nathan  
Gail Olding  
Gianluca Pisano  
Jenny Price  
Rossella Spoto

Tues - Friday 1-7  
Saturday 11-7  
Sunday 11-5  
closed Monday

A classic subject is given a contemporary twist as twelve established artists give their interpretation of the word 'Portrait'. At times intimate and unexpected, the works capture the unplanned moment; a fleeting thought that changes the expression, the vulnerability of the sleeping figure, abstractions that hint at flesh and sensuality.

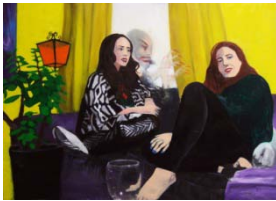
Come inside and see where a single word can take you.

# the Portrait show

14-19 April, 2015  
Private View:  
16th April 6-9 pm



\*espaciogallery



Eleanor Buffam

Everyday life is haunted by the fragments of dreams and the subconscious hints of alternate realities. We live entire lifetimes in other universes in the course of a night's sleep - the memory slips away quickly as the waking world takes over, but what traces has it left?

<https://ebuffam.wordpress.com/>

---



Gail Olding

The unnamable objects which suggest the body or body parts in an abstracted way, embodying notions of body, flesh, male, female, sex and sexuality...questioning our perceived reality and creating a space for the possibility of a new reality.

<http://gailolding.com/>

---



Gianluca Pisano

I paint an emotionally charged plethora of melodramatic imagery using very pronounced chiaroscuro, where there are violent contrasts of light and dark, images are emerging from a deep black background, light gives way to shadows, the end of knowledge, the place where mystery irresistibly excites the mind with the suggestion of the unknown.

I want my paintings to make powerful visual statements, creations filled with a presence that a spectator can't ignore.

<http://www.gianluca-pisano.com>

---



Helen Campbell

I favour working with a live model, not a photograph, as I believe that painting from life gives the artist the best opportunity to capture a real sense of the person. Sometimes a quick 15 minute sketch has more 'spirit' than a longer session, sometimes only over a period of weeks does a relationship with the sitter develop and they reveal, often subconsciously, the quirks and characteristics that make each of us truly unique.

[www.helencampbellartist.co.uk](http://www.helencampbellartist.co.uk)

---

# the Portrait show

14-19 April, 2015  
Private View:  
16th April 6-9 pm

\*espaciogallery



Jenny Price

Jenny's abstract and figurative paintings are influenced by the relationship between the conscious and the unconscious and the interplay between real and perceived states. Jenny uses acrylic and textiles on canvas and was trained at Camberwell School of Arts and Crafts. She has exhibited in France, the Netherlands and the UK.

[www.jennyprice.net](http://www.jennyprice.net)

---



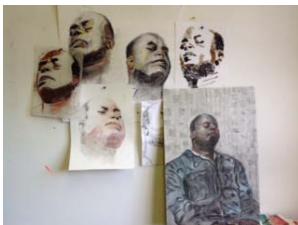
Jill Meager

When I paint the open gaze of young human and non-human creatures, I am interested in exploring the fragility, vulnerability and beauty of those who are dependent on us for their well-being and preservation.

I find these creatures astonishing and mesmerising, and when they are harmed by heedless human activity, I worry that barriers are irrevocably breached, that safety is lost and that sensibility hardens.

<http://www.jillmeager.com/>

---



Laurence Causse Parsley

The idea is to capture randomly, in the course of a normal day, people in a state of slumber, unconscious of life, and to share with the viewer this feeling of weight and abandonment.

<http://www.art-lac.com/>

---



Marianne Frank

Studying people, human behaviour, emotions and relationships is essential to my work.

“Character Studies” is a visual and emotional exploration of people I know and have come into contact with, and an attempt to express my experience and understanding of their individual characters.

<http://www.mariannefrank.com/>

---

# the Portrait show

14-19 April, 2015  
Private View:  
16th April 6-9 pm



\*espaciogallery



Maureen Nathan

Portraits from a series called "resting eyes". Looking inward or not looking. The implications are infinite. Resting or hiding, a likeness can be portrayed without showing the eyes, relying on the hands and posture to subtly express the sitter's character."

[www.maureennathan.com](http://www.maureennathan.com)



Rossella Spoto

I am attracted by the human condition, its weaknesses and strength, harmony and contradictions. My portraits are not about depicting the sitters per se, rather, about representing authentic, enigmatic, ironical characters, with distinct personalities and a strong presence, who convey messages that resonate with themes, memories and taboos commonly experienced.

<http://rossellaspoto.com/>



Sally Jones

Sal Jones' recent work uses the tradition of portraiture but the paintings have been adapted from fiction. On the surface the image is taken from a photographic source but the image is allowed to develop through the process of applying the paint; gestural brush marks and the heightened use of colour add an emotional and expressive dynamic to the work.

<http://saljonesart.weebly.com/>



Pedro Batzan

Throughout these years, Pedro has orientated his work into composing narratives both familiar and intriguing bringing an eerie and atmospheric feel. He is interested in finding, exploring, collecting and transforming different spaces, trying to bring an element of attraction and mystery. In his latest work the human figure portrays more vividly those feelings of not belonging, strangeness and detachment,...

<http://www.pedrobaztan.com/>