



***espaciogallery**

**159 Bethnal Green Road
London E2 7DG**



Second Nature

May 22nd - June 3rd 2014

Second Nature, an exhibition showcasing exciting ideas from a group of national and international artists, providing a fresh look into some of the aspects related to the natural world.



Old Leaf

Tania Beaumont

A Painter-Printmaker, Tania Beaumont uses a diverse mix of media to explore her chosen subject. Painting, original prints and more recently 'monotype papercuts'- cut and layered one-off prints. She takes inspiration from her surroundings: figures passing by, reflections in shop windows, birds on the grass, colours and structures from growth in nature etc.

www.taniabeaumont.squarespace.com

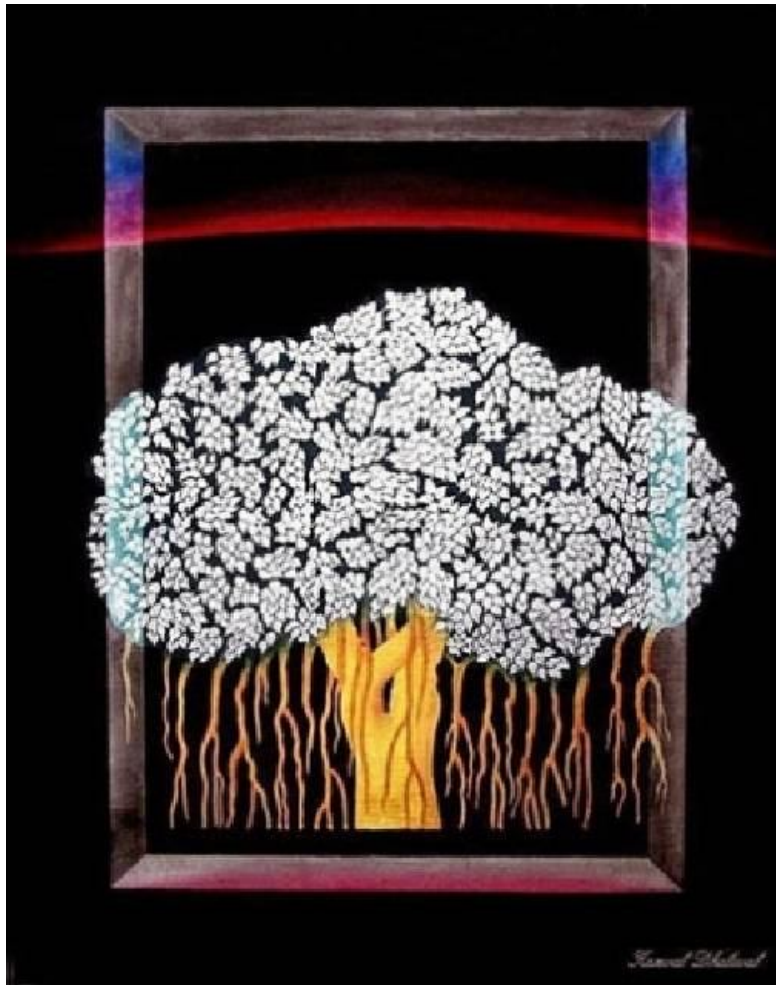


May Flower

Jennifer Bennett

I am interested in all things beautiful - from the tiny to the huge – the whole universe and everything it is made up of, including the people in it. This comes through in my work which is often inspired by the natural world around us and the people in it. Commenting on the beauty everywhere around us and how we are part of the nature we see around us (as much as we may try to sometimes fight this).

www.jenniferbennettartist.com



The Rootless II

Kanwal Dhaliwal

In his Roots series black and white dramas, trees hidden by black light and shade, are now a part of Dhaliwal's vision. He has used thinner, finer lines for trees and leaves and the background remains hidden. He brings this work to a new generation, especially to young immigrants born elsewhere, where only their skin color is a reminder of where they came from. People who do not know their roots or where they lie can never know them except as pictures, as fairy tales, as words in languages they sometimes understand and can rarely read.



Solanum Quitoense

Debbie Ding

This project, Kensington Gall, speculates on a future in which plant tumours are being intentionally bred and designed for ornamental purposes.



Reef

Ahmed Farooqui

Ahmed Farooqui's sculptures are inspired by botanical forms and the miniscule structures as seen through an electron microscope and by the language of genomics.

The series "Gelforms and Bioglyphs" is an attempt to visualise the relationship between nature and science. Sometimes the sculptures are encountered as interventions in a landscape.

www.ahmedfarooqui.com



Bluebells

Leigh Glover

Leigh particularly enjoys walking and has a great love of the outdoors. He is continually fascinated by the visual world - none more so than when his eyes feast on nature itself - flowers, plants, meadows, trees and shrubs. In all of these he sees a scene of rhythms and patterns - nature at work, made up of space and light, colours, textures and shapes. These turn themselves in his mind's eye into a poetic language in paint – long before he picks up his brush. When he begins painting to capture those visual moments of elation, he is engrossed by the challenge to depict them onto a flat surface: making marks that invite the viewer to share the joy that Leigh experienced in the real outdoors.



Ghost Lemons Spiral

Laura Gompertz

Her Ghost Fruit series comes from rotting fruit & vegetables onto canvas, using only the rotten products to produce the work. The result is then dried and fixed so it is held in suspension. She explores the idea of beauty where most people would feel revulsion.

www.lauragompertz.com



Organic

Ewa Goral

This series of works is related to the mysterious world of nature, painted mainly on the round canvas in order to emphasise the cyclical nature of vegetation. The whole concept is driven by the idea of discovering a hidden, dark side of the floral world. Dangerous and beautiful plants, seductive and mysterious like a femme fatale, may at first appear to be decorative but in fact keep their obscure secrets underneath.



Embankment

Sally Grumbridge

From her series River Kwai Revisited, Sally's work is a response to the beautiful landscapes and vegetation that 70 years ago were the scenes of unforgettable horror during the construction of the Thai-Burma railway in WWII.

A painter and printmaker, Sally enjoys experimenting and has a diverse portfolio of work.

www.sallygrumbridge.co.uk



Tanglewood, triptych

Russell Hall

These works could be viewed as a storyboard for an interpretation of the relationship between nature and humanity.

The pieces portray a view of the world as liquid, in flux, and filled with movement and energy. Although a link can be seen to the natural object in focus, the fluidity of the works make them separate and abstract entities in themselves.



Beach

Kate Nagle

Kate has always made things, although currently they are on a smaller scale. She has an ingenuity, which many of her generation possessed, which is sadly lacking today even with our 'recycle & reuse' attitude. She uses textiles and embroidery in an instinctive and inventive way to create soft sculptures that are not always what they seem.



Lost High

Nicki Rolls

In my current practice I paint idyllic landscapes, disrupted by hard geometric pattern. Borrowing from the aesthetic of early Disney animation film, my work explores ideas about human sentimentality and vulnerability in the digital age and about the impermanence of images and the shifting patterns of virtual space. It laments the displacement of the natural world by the virtual, the hyper-real, and the computer generated worlds.



Untitled

Clare Skill

Memories of the few days I have in the country side, enjoying the freshness of the air, the beauty of nature and just the joy of walking through grass, and then that sadness at the end of the day that it's late, and I need to go home and back to the city. Watching the colours fade with the light, wishing I could stay a little longer. These layered papercuts, all made by hand, are moments in a day in the lovely countryside.



Umbrella Tree

Kirsty Stutter

Kirsty's interest is in natural forms, enlarging them to accentuate their three-dimensional identities. In doing so, she constructs images that create a physical presence with graphic lines and subtle textures using wood and leather.



Poison Dart

Sandie M Sutton

Her works are made from discarded plastics, representations of the natural world, making a visual comment on the tide of dumped plastics & the environment; the disposable and the irreplaceable.

www.sandiemsutton.com

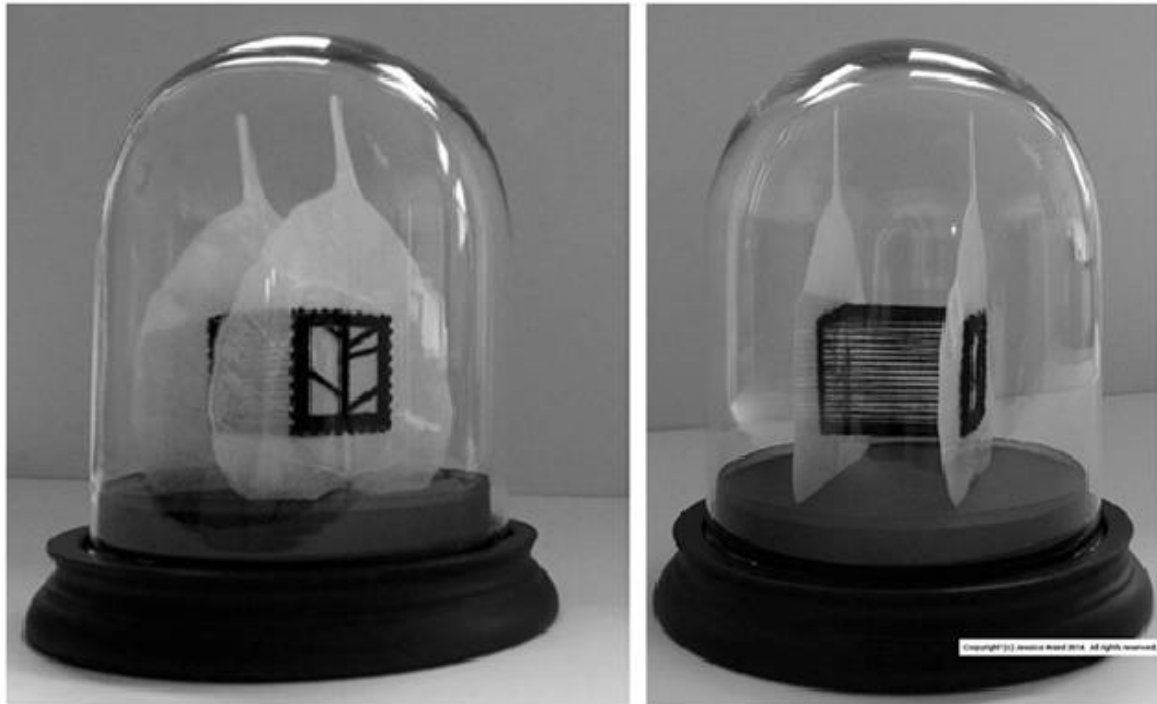


Nightjars

Maria Vesterinen

Maria Vesterinen is a Finnish born artist, currently living in London. Her paintings portray serene scenes of the summer night, when its shy dwellers emerge. The tranquil atmosphere in the paintings, invites us to pause and contemplate the nature around us. This series celebrates the wonders to be found in the natural world.

"There are always flowers for those who want to see them" - Henri Matisse



Bell Jar Works

Jessica M Ward

Jessica is preoccupied with the striking architectural nature of trees, especially the interlocking and interlacing of branches. She explores the dramatic silhouettes they create through collage, drawing, printmaking, sculpture and installation. Her choice of materials, techniques and limited palette, of black and white, results in highly refined, even abstracted images that not only depict but also evoke the sensory experience of trees.



www.chelseafringe.com

***espaciogallery**

159 Bethnal Green Road
London – E2 7DG

www.espaciogallery.com

www.facebook.com/espaciogallery